

WEST TEXAS REHABILITATION CENTER

ROUND-UP

2023

Legacy & Love
HONOREES







For traditions old & new

As a local cooperative, we share our profits with the Texans we serve. Since 2006, we've returned \$2.2 billion in combined cash and allocated equities to our members through our cooperative returns program. So, when you're ready to expand or enhance your agricultural operation, try a partnership that really pays. **Together we're better.**

877.944.5500
 NMLS493828 | capitalfarmcredit.com

LEADERSHIP *letter* BY STEVE MARTIN, PRESIDENT & CEO



As I write this note, it is my hope that it finds you and your family doing well, and blessed with happiness, health, and hope as spring is upon us.

I would like to send a huge thank you to every one of you who helped make our 53rd annual Telethon a resounding success! When we went off the air at midnight, our Decker Capital Partners Tote Board read \$1,805,000, an all-time, off-the-air record for the Telethon. The success of the Telethon would not be possible without you rallying to support West Texas Rehab as you have done for 70 years! Please mark your calendars for Rehab 2024 on January 27, 2024. I hope you will make an effort to attend or tune in, as it promises to be another great show.

West Texas Rehabilitation Center is always focused on the health and well-being of our patients and employees, some of whom you will

read about in this magazine. However, now and then, we are reminded that life can be fragile and that is certainly the case as we honor friends and family we lost in 2022 in this issue. They are folks who supported our mission, and were involved with West Texas Rehab on so many levels, many of whom ensured our survival in our early years, and without whom we would not be here today. Men and women who absolutely left a legacy, not only for their families to follow, but a legacy that we will strive every day to live up to at West Texas Rehab by continuing our mission of service to our patients, their families, and the communities we are involved in.

As I look at the list of folks honored in this year's memorial and honorarium sections, I am reminded of the board members, employees, volunteers, and supporters who have worked to develop so many impactful treatment programs, purchased state-of-the-art equipment, ensured our fundraising events were successful, and treated our patients with kindness, respect, and dignity. When you reflect on the stories in this issue, as well as past and future issues, remember that nothing we do at West Texas Rehab would be possible without you, those who came before us, and those who will come after us. It takes all of us to carry on the legacy of this amazing organization that Rex Allen, Sr. once referred to as "the house that love built."

That love is where hope springs eternal, as we look forward to what the

future holds for West Texas Rehab, our patients, and our communities. After recently completing remodels of our Ozona and San Angelo facilities, we are currently in a capital campaign to raise \$77 million to build a new facility in Abilene to replace our current facility, which has been our home for 68 years. The goal is to build a 127,000 square-foot facility that will accommodate our state-of-the-art equipment and complement our highly skilled and certified clinical staff. With the support of our foundation and others, we are \$21 million toward our campaign goal. This new facility will be our legacy to future generations of patients. Please track our progress at WestTexasRehab.org where you will also find ways to support this worthwhile project.

As always, may God continue to bless you and your family, West Texas Rehab, the great State of Texas, and may God bless our United States of America!



TABLE of CONTENTS

- 2 Leadership Letter
- 3 Foundation Spotlight
- 5 Patient Spotlight
- 7 Volunteer Spotlight
- 12 Hospice Spotlight
- 13 Equipment Wishlist
- 14 Calendar of Events

On the Cover 2023 Legacy of Love Honorees

- 15 2023 Legacy of Love Honorees
- 17 Legacy of Love Previous Honorees
- 23 2022 Memorials
- 45 Capital Campaign Spotlight
- 47 2022 Honorariums

Published by West Texas Rehabilitation Center
WestTexasRehab.org



Design & Layout © 2023
 Zoom Advertising Design
 281.794.2745 • ZoomTexas.com
michael@ZoomTexas.com

GIVING with LONG-TERM APPRECIATED ASSETS

When we think about donating to a charity, we usually think about writing a check or using a credit card, right? This may be easiest, but is it always best? The short answer is – *it depends*.

When should I consider using something other than cash to make my donation?

If you are thinking about making a larger gift than you typically do, you might want to consider using a long-term appreciated asset (asset or investment you have held for more than one year and a day that has appreciated in value).

Why might I want to consider using a long-term appreciated asset instead of cash to make my donation?

A donor will often use a long-term appreciated asset instead of cash to make a donation when they want to make a

larger donation and they do not want to use cash to make the gift.

What kinds of long-term appreciated assets should I consider donating?

While there are several types of long-term appreciated assets a donor may want to consider donating to charity, publicly traded securities

(stocks and mutual funds) and real estate are probably the most common. Fine art and collectibles are growing in popularity.

What are the benefits to donating long-term appreciated assets?

One of the biggest potential advantages to donating a long-term appreciated asset directly to charity (instead of selling it and donating the proceeds from the sale) is avoiding capital gains taxes. Another advantage could be not having to let go of cash you want to continue to hold.

What about donating an asset that has declined substantially in value since you acquired it?

If the asset you are considering donating has declined substantially in value since you acquired it, instead of donating the asset, you may want to consider selling

the asset at a loss and using the proceeds from the sale to make your donation.

How do I get started?

Contact one of our Foundation officers (see list below). We would love to visit with you and your financial and legal advisers about making donations of long-term appreciated assets and other legacy giving opportunities.

Chad Hirt at (325) 793-6415
chirt@wtrc.com

Jason Weaver at (325) 793-3435,
jweaver@wtrc.com

Chuck Rodgers at (325) 793-5475
crodders@wtrc.com

WE MAKE REAL ESTATE HAPPEN



Ekdahl Nelson makes real estate happen. We provide world class service by living out our company's core values. We thrive on providing the extra service that others will not. We work harder to understand your desires and get the deal closed.

THE LEADERS

IN WEST TEXAS RANCH REAL ESTATE

Abilene | Anson | Aspermont | Lubbock
Rotan | Stamford | Snyder | Stephenville



CONNECT WITH US

ekdahlrealestate.net

This is Cindy.



Cindy was diagnosed with breast cancer in 2021. She underwent surgery to remove lymph nodes followed by chemo and radiation. When she first met with her surgeon to remove the lymph nodes, she was warned about the possibility of lymphedema down the road. Lymphedema is a build-up of lymph fluid in the fatty tissues just under your skin. This build-up causes swelling and discomfort.

Unfortunately, Cindy did in fact develop lymphedema about a year after her surgery. She was brushing her hair and noticed in the mirror some unusual swelling in her left arm.

Because lymphedema is often a long-term or chronic condition, careful management is essential to help reduce symptoms and keep it from getting worse. Her oncologist was quick to refer her to West Texas Rehab for Occupational Therapy.

She started seeing Selina Elder, OTR, and the two formed a quick bond! Selina explains... “when the lymphatic system is overloaded you have to manually evacuate the fluid through therapy and manage long term with self care and compression garments.”

In America, over 3 million people are affected annually by lymphedema.

Our highly skilled clinicians have the knowledge and expertise to effectively get you on the right path and help you manage as long as you need us! Because at West Texas Rehab....

We're here for life.



To watch a video on Cindy, or to learn more about our services, incredible staff, and/or facilities, please open your camera and scan the QR code. Thanks!



WestTexasRehab.org



Wylie High School Performing Arts Center

RHS Construction Services focuses on commercial construction including new construction and remodels.

RHS specializes in metal stud framing, drywall, batt insulation, acoustical ceilings, tape, bed, paint, concrete and interior demo.

Call us today for your commercial construction needs.

325-455-0522



“Hiring RHS was the absolute best decision we made throughout our entire renovation project. Michael and his team delivered an incredible building for Radiant Life Church and they handled themselves with complete integrity along the way. I highly recommend RHS for all your construction needs!!

KEVIN PETERS
RADIANT LIFE CHURCH, PASTOR

RHS Steel Constructors focuses on metal building and structural steel erection.

We specialize in commercial but can take care of your residential needs as well.

Call us today for your metal building and structural steel needs.



VOLUNTEER *spotlight* BY CHUCK RODGERS, VP DEVELOPMENT, WTRC FOUNDATION



Terry & Deana Bailey

Volunteers. They’re the people that simply make life better for those around them, and do so wanting nothing in return. Their importance is unmeasured, and their desire to give of themselves overflows to those around. If we’re honest, they’re the true backbone of our organizations. And for us at West Texas Rehab Center, the patients and clinicians and staff, well...where would we be without them?!

Allow us to introduce you to two of our more amazing volunteers, Terry and Deana Bailey! What makes them “more amazing”, you ask? The simple fact that they volunteer and give for two reasons: they have the same passion we do for helping kids, and they have a behind-the-scenes, servant’s heart that’s downright contagious!

When you bring up the names Terry & Deana Bailey, most of us immediately think of the Rehab Top Gun Sporting

Clays Classic clay shoot, but their history with us goes back farther than that. They originally started volunteering and participating in the old Round Up for Rehab Trail Rides, and it didn’t take long for two competitive shooters like them to start helping out with the clay shoot. Now, they’re names are almost synonymous with that event. They help on every aspect of the shoot, from sponsorships and team recruitment, to hands-on assistance the days before and after the event.



Jack Willingham and Bill Feagan, who were really more mentors for me, who served on the board for the Rehab. I



just kind of followed in their footsteps. Deana and I have both received occupational therapy there, but really, it’s the millions of kids we’ve seen get help. That’s the main reason we love helping the Rehab!”

Lots of folks love what we do, and we are eternally grateful! Terry & Deana Bailey have taken that love and turned it into action, helping us raise thousands and thousands of dollars every year so we can help “millions more kids!” So, Terry & Deana, from the bottom of our hearts from all of us at West Texas Rehab:

THANK YOU!



TRENCHLESS PIPE RESTORATION
WATER•SEWER•GAS
COMMERCIAL & RESIDENTIAL
24 HOUR EMERGENCY SERVICE!
WWW.BLACKPLUMBING.COM



CONCRETE CUTTING
WALL SAWING
3D IMAGING
FLAT SAWING
CORE DRILLING
WWW.MAVERICKSAWCUTTING.COM

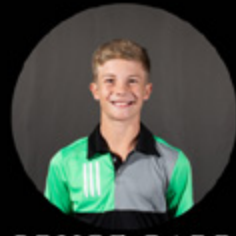


★ Thank You ★

TO OUR STARS, PROS, SPONSORS, AND VOLUNTEERS FOR A
SUCCESSFUL EVENT BENEFITING HOSPICE OF SAN ANGELO!



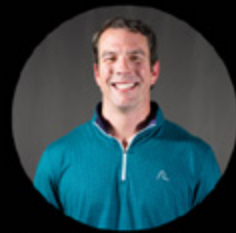
BRIE PERKS



BRYCE CARR



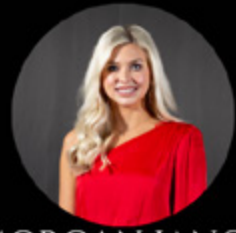
CAROL BARTON



JAMES SKINNER



MATT LEWIS



MORGAN JANCA



RETHA FORTENBERRY



STACY BEATY



TYLER WRIGHT



YAZMIN GARDEA



STAMFORD

ART FOUNDATION

OFFICIAL
WESTERN
ART SHOW
CAPITOL OF
TEXAS

TUESDAY
June 27, 2023

6:00 PM

Located at:
John Selmon
Memorial Gallery
Stamford, Texas

Dinner Catered
by Joe Allen's

50th Anniversary

We hope you can join us for
another exciting year at the
Western Art Show Capitol Of
Texas in support of the West Texas
Rehabilitation Center!



Live Performance by
Jake Hooker and The Outsiders



CONTACT OUR OFFICE FOR MORE DETAILS:

☎ 325-793-3509

✉ EKAIN@WTRC.COM



WEST TEXAS REHABILITATION CENTER

ROUND-UP
for REHAB

Neighbor Helping Neighbor

2023 Rehab Lamb & Goat Sale

Tuesday, June 13 at 7:00pm

Stephens County Ag Barn

Cr 245

Breckenridge, Tx

FOR MORE INFORMATION, CONTACT:

JASON PREW - ABILENE 325-793-3510

DORAN REYNOLDS - SAN ANGELO 325-656-1599

REHAB

WEST TEXAS REHABILITATION CENTER

SPRING SWING GOLF CLASSIC

Presented by City National Bank

Please join us for a fun day of golf benefiting West Texas Rehabilitation Center.
Help support our patients swing back into action!

JUNE 2, 2023 | TEE TIME: 8AM

QUICKSAND GOLF COURSE

For team and sponsorship information, please contact
Victor Gutierrez at (325) 374-1277 or Doran Reynolds at 325-656-1599.

City National Bank

HOSPICE *spotlight*

Building Bridges is West Texas Rehab Center's Hospice of San Angelo program for grieving children. It is a grief support group specifically designed for children and teens who have experienced loss through the death of someone significant in their lives. Trained staff and volunteers offer support through the use of activities including art, music and other creative means to encourage children to express their feelings of grief and allow them to share cherished memories of their loved ones. Peer groups help decrease the isolation often felt by children and teens who grieve, as they form bonds with other participants who have also experienced loss. With Building Bridges as support, children and teens come together to share the experience of life.

Building Bridges seeks to promote growth and healing to grieving children and teens by helping them to identify their feelings of grief in a safe environment. Group activities help children and teens begin to express their feelings and start the journey toward grief resolution. Participants' self-esteem is improved through the validation of the unique qualities of individual grief. Building Bridges provides guidance for children and teens to adapt to the many changes in their families and teaches skills to help cope with loss that will effectively serve them throughout life.

Building Bridges is offered twice annually

during each school year. During each session, groups meet for one hour on Tuesday nights for six weeks. Groups are divided according to age and each group is facilitated by carefully trained volunteers. Although our volunteers are well trained in grief theory, they will simply provide grief support to participants, not psychotherapy. Parents or caretakers attend an adult session each Tuesday evening designed especially for them. There is no charge to participate in Building Bridges and the program is open to any grieving child in the community. If you have a child who could benefit from grief support and would like to attend Building Bridges, please call our office at (325) 658-6524. Volunteers are the cornerstone of the Building Bridges program. Adults who have a special love for children and a desire to help a child's grieving heart are encouraged to consider becoming a Building Bridges Volunteer. Training classes are offered to teach grief theory, developmental aspects of loss, the art of listening, and techniques for facilitating small groups. General training to become a Hospice of San Angelo volunteer is also required. The training is offered during the summer.

For more information on becoming a volunteer please contact Libby Probandt at (325) 658-6524 or lprobandt@wtrec.com

11

12

EQUIPMENT *wishlist*

Description	Quote
Abilene Adult Therapy- OCCCUPRO Function Capacity Evaluation Software:	\$13,225
Abilene Adult Therapy- Biodex Balance System for Vestibular Treatment:	\$12,665
Abilene Pacesetters- Fitness Equipment for Pacesetters Program:	\$5,525
San Angelo Adult Therapy- Stereo Optical Vision Screener for Driving Evals:	\$9,000
Abilene Adult Therapy- (4) - High/Low Treatment Tables:	\$6,980
Abilene Pediatrics- Neofect Digital Smart Pegboard:	\$3,663
San Angelo Adult Therapy- Lightforce Laser Therapy System:	\$49,900
Abilene Adult Therapy- BTE Work Simulator:	\$45,357
San Angelo Orthotics and Prosthetics- Rikon Band Saw:	\$1,500
Abilene Adult Therapy- Genu Ease Total Knee Replacement Recovery System:	\$8,190
Abilene Pediatrics- VitalStim Plus Dysphagia Therapy Unit for Speech Therapy:	\$2,499
Abilene Pediatrics- Prentke Romich-Salttillo Speech Generating Device:	\$8,423
San Angelo Hospice- High Flow Oxygen Concentrator (2):	\$2,420
Abilene Employer Services- Pulmonary Function Test Equipment:	\$2,084
Ozona Adult Therapy- Bloodflow Restriction Therapy Unit:	\$5,299
Abilene Adult Therapy- Sit 2 Stand Squat Assist Trainer:	\$6,225
San Angelo Audiology- Verifit Skull Stim for bone conducting hearing aids:	\$3,105
Abilene Pediatrics- Green house and gardening table for Horticulture Therapy Program:	\$8,810
Abilene Pediatrics- Feeding program supplies:	\$780
Abilene Pediatrics- Annabel Tipi Trellis for Horticulture Therapy:	\$1,200
Abilene Pediatrics- Enabling Devices Switch Assessment Kit:	\$1,446
Abilene Pediatrics- Enabling Devices Kit for the visually impaired:	\$2,957
Abilene Pediatrics- Just for Kids whole body vibration plate:	\$4,250
Abilene Pediatrics- BlazePods x 12:	\$800
Abilene Pediatrics- Grip Pro Upper Extremity Training Equipment:	\$2,800
San Angelo Audiology- Video Otoscope to obtain images of ear canal:	\$2,460
Abilene Adult Therapy- Easy Stand Evolv Standing System:	\$5,206
San Angelo Adult Therapy- Lympha Touch Therapy Device:	\$5,784
Abilene Adult Therapy- Pathway Ultrasound Imaging System for Women's Health:	\$7,450
San Angelo Adult Therapy- ReWalk Myocycle Exercise System for Spinal Cord Injuries:	\$33,650
Abilene Pediatrics- Pedi Therapy Equipment- Peanut ball, Resistance Tunnel NMES Unit:	\$3,000
San Angelo Adult Therapy- Tactile Lymphedema Pump:	\$9,510

To donate a piece of equipment from this wishlist, visit:
westtexasrehab.org/general-donation/wish-list-equipment

CALENDAR *of events* ABILENE DATES, KARLA @ 325.793.3507 / SAN ANGELO DATES, STACY @ 325.223.6311

Date	Event
May 2nd 5th 12th 30th-31st	Abilene Gives and San Angelo Gives Grain Round-Up – Top Tier Grain in Miles, TX @ 6:00pm Legacy of Love Event – Abilene - Abilene Country Club Abilene Camp Rehab
June 1st 2nd 4th 6-8 13th 27th	Abilene Camp Rehab Spring Swing Golf Tournament - San Angelo Hospice of the Big Country Butterfly Release - Nelson Festival Garden, Abilene San Angelo Day Camp Round-Up for Rehab Lamb & Goat Sale - Breckenridge Stamford Art Show
August 19 24	Round-Up Kick-off BBQ – Fort Chadbourne, Rehab Summer Dinner Show - Abilene Convention Center
September TBD 12th 16th 21st TBD 28th TBD	Round-Up Lunch Ballinger, First National Bank of Ballinger Round-up for Rehab - Abilene Sale Frank Caraway Sporting Clays Classic - San Angelo Claybird Association, 9am Round-Up Bob's Supper Christoval/Eldorado, Bar H Ranch (Helmets), 6pm HOBC's Golf Tournament - Fairway Oaks Golf Course - Abilene - 8am tee off Round-Up Sale – San Angelo Producers C.A.S.T – Twin Buttes - San Angelo
October 1st 4th 5th 9th 10th 12th 14th 21st	Cotton Round-Up - San Angelo, TX Round-Up Coleman Sale - Coleman, TX @ 11am Round-Up Dudley Brother - Comanche, TX Round-Up Pig Sale Powell Bull Sale Fall Rehab Dinner Show – San Angelo Ozona Goat Roper's Gala Round-up for Rehab - Stephenville Cattle Co. @ 11am
November TBD 2nd 3rd 7th	Hospice of the Big Country Candlelight Memorial Service, Logsdon Chapel HSU, 6:30 pm Quilt Brunch - San Angelo @ 10:30am Quilt Brunch - Abilene Board Room @ 10:30am Round-Up Sweetwater Shrimp Peel – Nolan County Annex – Sweetwater @ 6pm
December 2nd 9th TBD TBD	Round-Up Danny Isbell Memorial Rehab Jackpot Show, Taylor County Expo Center - Abilene , TX Round-Up Big Country Christmas Ball – Snyder Coliseum Doors open @ 7pm HOSA Light Up a Life @ 6:00pm - Cactus Hotel Lobby – San Angelo HOSA Candlelight @ 6:00 pm. – Emmanuel Episcopal Church – San Angelo
January 2024 27th	Rehab 2024 Telethon/Auction – Abilene Convention Center @ 6pm

2023

TBD: To Be Decided. Due to COVID-19, all dates are subject to change.
Please check our website at WestTexasRehab.org for all updates.

West Texas Rehabilitation Center

2023
Legacy of Love
HONOREES



Glen D. Churchill



James Minor Alexander



James Oscar Teel, Jr.



Jerry Lake



Larry Mac Hall

West Texas Rehabilitation Center

2023
Legacy of Love
HONOREES



Nancy West



Patsy Arledge



Ronnie Blackmore



Royce Fancher



Billie Jean Fancher

2023
Legacy of Love



PREVIOUS HONOREES 1953 to 2022

-A-

Ackers, Dale, Abilene
Ackers, Roy Helen Mingus, Abilene
Adams, Barbara Jean, Abilene
Adams, Hal. E. & Annie, Midland
Adkins, Maye Walker, Midland
Akers, Dave & Margaret, Junction
Allbritton, Robert, Miles
Alexander, C. D., Guymon, OK
Alexander, James Michael (Mike), Abilene
Alexander, Jerri Hills, Abilene
Alexander, Minor & Ruth, Abilene
Allen, Andrew & Cleta, Brady
Allen, Earl A. & Ivy, Brownwood
Allen, Rex Sr., Arizona
Amarine, Wayne & Mattie “Jo”, Monahans
Ammons, Josh, Abilene
Anderson, Carl T., Wichita Falls
Andrews, Florence Ackers, Abilene
Andrews, Jack, Abilene
Andrews, Joe & Jeanette, Junction
Antilley, Frank K., Wingate
Arledge, Jack Edd, Abilene
Arledge, Roy W. & Lois, Stamford
Ashworth, Bette Jane, San Angelo
Austin, John Howard & Claudia, Abilene

-B-

Babb, James & Alice, Abilene

Baggett, S. N. & Fannie, Abilene
Bailey, Delos B., San Angelo
Baird, Allen, Fort Worth
Balkum, John “J. H.” & Vida, Cross Plains
Ballard, Mildred Inez, Abilene
Ballenger, Lena Fay, Kingsland
Barber, Carolyn Grisham, Abilene
Barber, Harwell, Abilene
Barber, Rita, Abilene
Barnhart, D. M. “Barney”, San Angelo
Barnhart, Loleta, San Angelo
Barnell, Richard & Betty, Rockport
Barron, Stanton J., M.D., Abilene
Barrow, Earnest & Dorothy, Eola
Batjer, Arch, Abilene
Beard, Alice Joy, Abilene
Beadel, J. R., Brownwood
Beck, L. Gray & Mary June, San Angelo
Beck, Virginia, Blanket
Beckham, Guy Robert ”Bob”
Beckham, Abilene
Beckham, Peggy, Abilene
Beitscher, Seymour, Abilene
Benson, Catherine “Kitty”, Abilene
Bessire, Dr. Milton, Abilene
Beyer, Charles, Menard
Bilbrey, Lena, Abilene
Bitters, Charles T., San Angelo

Bitters, Helen Marie, Brady
Bland, Robert L., Jr., Trent
Bond, Mildred Allie, Brookesmith
Boothe, Ray, Sweetwater
Bosworth, Lanis, San Angelo
Bottom, Dr. Virgil E., Abilene
Boyd, Charlie & Elsie Dean, Lometa
Boyd, Tommy, Throckmorton
Bradley, Billye B, Eastland
Bradley, Earl C., Eastland
Brashear, Cline, Wichita Falls
Braymer, W. M. (Bill), Abilene
Brewster, Jimmy & Sara, Breckenridge
Briley, Alta Belle, Amarillo
Brinson, Anthony, DeLeon
Britton, Marie, Valera
Broaddus, Lula Mae, Ruidosa, NM
Brooks, Clifton & Lillian, San Angelo
Brooks-Lewallen, Nita, Sweetwater
Brown, Clara Seher, Abilene
Brown, Ellen, Ballinger
Brown, Lillie, Abilene
Brown, Mrs. Jessie, Abilene
Brown, Margaret Sears, Abilene
Brown, Michael Wayne, Abilene
Brown, Judge Raleigh H., Abilene
Brown, Robert J. (Bob), Abilene
Brown, Ruth, Lamesa

LEGACY of LOVE *previous honorees • 1953 to 2022*

Bruce, Birdie Lee, San Angelo
Bruce, Dora Ruth, Goldthwaite
Bruce, Earle, Goldthwaite
Brumley, Lucille, Abilene
Bull, Della Ruth, San Angelo
Bullard, Van Buren, Aspermont
Bunyard, Mary Ellen, San Angelo
Burditt, Tom C., M.D., Abilene
Buster, Claude & Ruth, Merkel
Byram, John, Abilene

-C-

Caffey, Ruth A., Abilene
Caldwell, Guy, Abilene
Campbell, T.C., Abilene
Caraway, Bennye, Ranger
Caraway, Floyd Earl, Ranger
Caraway, Floyd Irlan, Ranger
Caraway, Frank, San Angelo
Caraway, Michael James, San Angelo
Cargile, Carolyn, San Angelo
Cargile, John S., San Angelo
Carothers, Grover (G. C.), Stamford
Carpenter, Horace & Ann, Abilene
Casey, Frances M., Phoenix, AZ
Casey, Scott, Snyder
Cator, George & Wilma, Amarillo
Cator, Marshall, Sunray
Cervenka, Claudean, Coleman
Chalmers, John, Abilene
Chandler, Daisy Forester, Ballinger
Chism, I. M. (Ike), Albany
Clark, Bonnie Mae, Ballinger
Clark, Skeet, Rising Star
Cleere, Byron E. “Sonny”, San Angelo
Cleveland, Glenn, Brownfield
Cloud, Marjorie, Abilene

Cloud, R. O., Clyde
Cloud, Rene, Clyde
Cobb, W. H. & Mary Ellen, Amarillo
Cofer, Charles L. & Juanita, Abilene
Colbaugh, Rose Marie, San Angelo
Cole, Douglas, Winters
Cole, Frances, Eastland
Coleman, Nellie, Rockport
Cooke, Mack & Connie, Haskell
Craighead, Bobbie, Albany
Craver, A. G., Abilene
Cribb, Dorothy Estep, San Angelo
Crouch, Peggy Jo, Abilene
Culp, Paul & Leigh, Kerrville
Cumbie, Edward “Ed”, Bronte
Currie, Nettie Odom, Ballinger
Cutbirth, Seale T., M.D., Brownwood

-D-

Dahl, John, Gruver
Dallman, Georgia S., Alpine
Daniel, Mayme K., San Angelo
Dankworth, Doris “Doodle”, Ballinger
Darling, Thomas J., Albany
Davidson, Joanne “Jo”, Ozona
Davis, Dave & Nez, Abilene
Davis, Barbara, Brownwood
Davis, Louie G. & Ouida, Abilene
Davis, Sharlene T., Abilene
Davis, Weldon, Coleman
Dawson, Dorthy Louise, Abilene
Day, Kenneth, Brownwood
Deegan, Robert “Bob”, Abilene
Dick, Cloys Riley, Coleman
Dickson, E. Hal, San Angelo
Dickson, Cathy, San Angelo
Dieringer, Bonnie T., San Angelo

Dismore, Itha, Ballinger
Dixon, A. L. & Lee, San Angelo
Donsky, Nathan, San Angelo
Douglas, Mildred Hill, Miles
Drennan, Thomas & Nobia Lee, Abilene
Droll, Ben & Anne, Olfen
Dudley, Mildred “Pete”, Mertzon
Dudley, Preston, Mertzon
Dueser, Frederick & Dorothy,
Breckenridge
Duke, Dan Clifton, San Angelo
Dunigan, James P. “Pat”, Abilene

-E-

Edington, Bobbie Jean, Coleman
Edington, Duwayne, Coleman
Edwards, Estella Laverne, Breckenridge
Edwards, Joseph Henry & Winona,
San Angelo

Edwards, Morris, Clyde
Edwards, Weldon & Dorothy Jean, Clyde
Ekman, Mabel “Babe”, Austin
Ekman, Naomi “Sis”, Austin
Elliott, Clarence Sr., Abilene
Elliott, M/M Pete, Abilene
Emmons, J. H. & Annie, Eldorado

-F-

Fair, Jewel C., Abilene
Fancher, Bill & Nell, Hamlin
Farnsworth, Edward L., Abilene
Fawcett, Randee, Sonora
Feagan, E. C. “Bill”, Jr., Hamlin
Ferguson, Stella, Knox City
Ferris, Dr. Curzon C., Abilene
Fisher, Minnie, Comanche County
Fite, Frank, Abilene
Flache, John A., Austin

LEGACY of LOVE *previous honorees • 1953 to 2022*

Flood, Lucille, Paradise, CA	Grist, Freda L., Midland
Ford, Roberta Scott, Sylvester	Grube, Patsy, Brady
Foreman, M/M Wendell, Abilene	Guest, Frances Arledge, Sweetwater
Forman, John & Evelyn, Abilene	Guthrie, Marvin L. & Inez T., Brookesmith
Frame, Duncan, Abilene	-H-
Franklin, Jim, San Angelo	Halbert, Ann, Breckenridge
Freeman, Jana, Big Lake	Hale, Kim Patrick, San Angelo
Frerich, Floyd, San Angelo	Hall, Elbert E., Abilene
Freitag, Mabel, Eldorado	Hall, Theresa “Terry” Hall, Abilene
Freitag, William “Bill”, Eldorado	Hallmark, James, Abilene
Fulwiler, Jack, Abilene	Hamil, John, Abilene
Fulwiler, Mrs. Jack (Lorraine), Abilene	Hann, Martha Belle, Abilene
Furr, Dr. Oneta R. & Dr. H.	Hardy, RoffW., Abilene
Bedford, Abilene	Harper, Ed, Rowlett
-G-	Harper, Hermann Paul, Abilene
Gentry, Elbert A., Abilene	Harper, William E., Woodson
George, Melba Blake, Fisher County	Harris, Annie Louise, Brownwood
Gill, James “Jim”, Coleman	Harris, David & Myrtle, Abilene
Gillum, Cecil C., Abilene	Hassen, Fareed, Stamford
Glass, Alice, Carlsbad	Hassen, Insaf, Stamford
Glass, Edgar, Carlsbad	Haynes, Elmer C., Jr., Brownwood
Goetze, Max, Wichita Falls	Hays, Curly, Abilene
Goolsby, Jimmy, San Angelo	Hays, Jean K, Abilene
Gotcher, Danny, San Angelo	Headstream, Dean & Ethel, Colorado City
Gouldy, Rosemary, Fort Worth	Hearrell, Suzanne Marie, Abilene
Gouldy, Ted, Fort Worth	Heidenheimer, Jim M., Anson
Graham, DeAlva, Abilene	Heidenheimer, Thelma, Anson
Graham, Paul D., Abilene	Henderson, Sarah E. “Sally”, Abilene
Graves, Kyle & Marguerite, Cleburne	Henry, Fred G., Abilene
Greathouse, Marcella, Abilene	Henry, Wiley Leverett, Goldthwaite
Greathouse, Myrle, Abilene	Herber, Marvin George, Texline
Green, W. H. “Bill”, Jr., Albany	Herring, Col. Tex, Lawn
Gregory, Mary E. “Peg”, San Angelo	Herring, E. S. (Snooky), Maryneal
Griffin, Dorothea Creswell, Lawn	Herring, Glenyth, San Angelo
Grimes, Homer L., Jr., Sweetwater	Herring, Jack, Ballinger
Grimes, Mary Bob, Abilene	Hickman, Maureen, Coleman
Grisham, M. A. & Josephine R., Abilene	Hickman, W. R. “Bill Dick”, Coleman

Hicks, Darlene Isbell, Hawley
Higginbotham, Dale, Abilene
Hills, Lilly Reber, Rule
Hinkle, Dorothy, Hamlin
Hixon, Marie Little, Sweetwater
Holland, Jay W., Abilene
Holt, Harry, Abilene
Holt, Mary Clark, Abilene
Hooks, Nelle Smith, Abilene
Hooks, Ralph, Abilene
Horwood, Elizabeth Hildebrand, Sterling City
Horwood, Stanley “Stan”, Sterling City
Housley, Bob “Boppa”, San Angelo
Howell, Gene, Grand Prairie
Hudson, T. Brockett & Dorothy, Austin
Huff, Hope Wilson, San Angelo
Hume, Gladys Gooch, Abilene
Hunter, Melvin, Sweetwater
Hurley, James, San Angelo
-I-
Isaacs, Jack E., Snyder
Isbell, Danny, Abilene
-J-
Jackson, Billy & Leora, San Angelo
Jennings, Lillyan M., San Angelo
Johnson, Hollyce, Burleson
Johnson, Walter F, Sr., Abilene
Jolly, Uda Wasson, Snyder
Jones, Allie Chapmond, Winters
Jones, Ann M., Albany
Jones, B. O. & Wilma, Stephenville
Jones, Cal, Van Horn
Jones, Dee & Florine, Knickerbocker
Jones, Johnny, Brady
Jones, Mrs. Percy, Abilene
Jones, Robert M., Abilene

LEGACY of LOVE *previous honorees • 1953 to 2022*

Jordan, Peggy, Mason
Jordan, Willard, Mason
Joyce, Skipper & Lucille, Snyder
Junell, Frank, San Angelo
-K-
Kay, C. L., Abilene
Kennedy, Robert E. (Bob), Abilene
Kenney, Guy Nell, Stephenville
Kensing, Robert, San Angelo
Ketzler, Diane Brown, San Angelo
Killebrew, Marie Houston, Canadian
Killebrew, Walter, Canadian
Killian, K. O., Abilene
Kimmell, Ardean, DeLeon
Klump, Cecil L. & Maxine, Old Glory
Koenig, Merl Dean, Albany
Koth, Vera Hattie, San Angelo
Krasner, Burney & Edith, Abilene
-L-
Langford, Lisa D. (Slentz), Graham
Langford, Georgia Mae, Ranger
Langston, Lynn & Evie, San Angelo
Lear, Morris & Lillie Bell, Brownwood
Leddy, James, Abilene
Leland, June Frost, Ruidoso, NM
Lewis, Hellen McDavid, Abilene
Lewis, Nena Kate, Abilene
Linthicum, Horace Harold
“Lad”, Barnhart
Linthicum, Horace W., Eldorado
Lipson, Roy, Gorman
Little, Opal, Eastland
Longshore, Roy, Big Spring
Loyd, Doris Strain, Abilene
Lundquist, Ebbe M., San Angelo
-M-
Malcolm, Ida Pearl & J. Floyd, Abilene

Malone, Pearl, Abilene
Marti, Jo Chambers, Cleburne
Martin, Birdie L., Colorado City
Martin, Elmer, Colorado City
Massey, P. L. & Gladys, Abilene
Matli, Peggy Landis, Fredericksburg
Matson, Perry & Esta Lee, Brownwood
Matthews, Joe B., Albany
Matthews, John A., Albany
Matthews, Julia (Judy) Jones, Abilene
Matthews, W. Watt, Abilene
Mattingly, M/M John Thomas, Abilene
Mayfield, Deanna, San Angelo
McBryde, James M., Abilene
McCain, Jack Wesley, Sweetwater
McCarty, Blanche Gist, Abilene
McCarty, Guy W., Abilene
McCloud, Judge Austin O., Eastland
McCort, Harold & Kathleen, Zapata
McCracken, James, Cisco
McCullough, Mark, Seminole
McCully, Tex & Velma Jo, San Angelo
McDonald, Cecile, Sterling City
McDonald, Chesley, Sterling City
McDonald, Dr. Donald, Sr., Abilene
McDonnell, Billy, Abilene
McDonnell, Eula Bell, Abilene
McDonnell, Ray W., Abilene
McDonnell, Frank, Ft. Worth
McGaha, J. D. & Virgie, Abilene
McGee, B. F., Sweetwater
McGough, James D., Hamlin
McIntyre, John, Abilene
McKenney, Elmer, Abilene
McKnight, Mabel S., Throckmorton
McLaughlin, Amy, San Angelo
McMurtrey, Lewis L., Eden

McRorey, Juanita Rogers, Blackwell
Meadors, Martha Frances, Haskell
Mears, Herbert H., Jr., Ft. McKavett
Meleen, Frank & Alta, Abilene
Metzger, Ola Belle, Abilene
Meyers, Frank W. Jr., Abilene
Meyers, Merlaine “Bitsy” Gruver, Abilene
Miers, Bynum, Abilene
Miller, Johnnie Mae, Abilene
Milliorn, Tommy, Abilene
Milner, Katherine K., San Angelo
Minnich, H. P. (Pete) & Marie, Breckenridge
Mitchell, Keith & Polly, Sanderson
Mitchell, Shirley, Sanderson
Mitchell, Tom, Ozona
Mittel, Ronnie, Eldorado
Moeller, Mary, Rowena
Moore, Wayne K., Abilene
Moorhouse, J. C. (Togo), Benjamin
Morford, Bob, Abilene
Morgan, Hal W., Fort Worth
Morris, Bob & Elizabeth, Abilene
Morris, C. A. & Lennis, Abilene
Morris, Don Thomas, Abilene
Morris, Jerry Dale, Sr., Abilene
Morrison, Gary, Abilene
Morrison, William “Bill”, Abilene
Morrison, William Frank, Jr., Abilene
Mosley, Velma Lee, Santa Anna
Mullins, Faye, Snyder
Musgrave, Kenneth L., Abilene
Myers, Marilynne Howsley, Albany
-N-
Nail, Eva, Lorenzo
Neff, Hubert, Big Spring
Nelson, Gladys, Stamford

LEGACY of LOVE *previous honorees • 1953 to 2022*

Nelson, Grover, Abilene	Raney, Inez Hobbs, Ranger
Nelson, Marie, Abilene	Rasor, J. W. “Jim”, San Angelo
Nelson, Mary McKenney, Abilene	Rawlings, James “Jim”, Bronte
Nelson, Tommy & Lynda, Abilene	Rawlings, Joe D., Bronte
Nevins, James B., San Angelo	Ratliff, Faye, San Angelo
Nicholson, Barbara Hart, Abilene	Ray, L. Glynn, Abilene
Nicholson, Randy, Abilene	Read, M. J. “Jim”, Jr., Ozona
Nilsson, Marjorie, San Angelo	Read, Nat, Ozona
Nunn, Ollie, Pecos	Reaugh, O. H., Breckenridge
-O-	Reed, Bill J., Abilene
Odom, R. Wayne, Cross Plains	Reeves, Mabel Kathleen, Abilene
Ohre, Deverise “Dev”, Abilene	Reeves, Sam, Abilene
Olsak, Leroy & Claire “Sally”, San Angelo	Reynolds, Forrest, Buffalo Gap
Oswalt, Z, Abilene	Rhoades, Travis & Lida, Snyder
-P-	Rhodes, L. G. “Dusty”, Abilene
Palmer, Edward “Eddie”, Abilene	Richards, Clara, Avoca
Palmer, Maggie, Abilene	Richardson, Charles N., Kilgore
Parker, James Magee, Abilene	Richburg, Don, Roscoe
Partusch, San Angelo	Richburg, Frances Joy, Roscoe
Patterson, Helen, Munday	Richmon, Lora Stewart, DeLeon
Payne, Mary Johnston, Abilene	Richmon, Millard, DeLeon
Pearce, Betty Crawford, Abilene	Riley, Dorma L., San Angelo
Pentecost, Bertha, Coleman	Riley, Pamela Susan “Sue”, San Angelo
Perini, V. C., Abilene	Riley, Tommy Anon, Snyder
Perry, Betty Jean, San Angelo	Rion, Elizabeth (Beth), San Angelo
Pflugger, Dora Sugg, San Angelo	Roberts, Clemmie “Irene”, Sweetwater
Pflugger, Margaret “Meg”, Lubbock	Roberts, Paul & Lottie, Breckenridge
Pickard, Eugene & Pauline, Albany	Romeo, Dorothy Cope, Coleman
Pierce, Milton R., San Angelo	Root, Murphy A., Breckenridge
Pinkston, Linda R., Abilene	Rubick, Vada Lee, Anson
Pitzer, Phillip M., Breckenridge	-S-
Poe, Charlsie, Winters	Salmon, Pam, San Angelo
Post, Lois E., Abilene	Salyers, H. T., Abilene
Powell, James, Seymour	Sanders, Jacky & Sandra, Haskell
Powell, Nancy Bryan Hunt, San Angelo	Saxon, Bill & Mary, Marble Falls
Prater, E.W. “Bill”, Jr., San Angelo	Sayles, Robert “Bobby”, Tuscola
-R-	Schaffer, Herman E., M.D., Abilene


Schmidt, Gilbert A. & Laura P., Johnson City
Schultz, Flora, San Angelo
Scott, Homer, Abilene
Sedberry, William, Hamlin
Sellers, Cecil L., Hamlin
Sellers, Goodson & Ethelyn, Munday
Shannon, Bill & Donnella, Abilene
Shaw, Harold Loyd “H. L”, Abilene
Shelton, A. B. (Stormy), Abilene
Shelton, Patty, Abilene
Sherwood, Roy, Abilene
Shirey, W. T. (Buster), Abilene
Shirley, Marjorie L., Kankakee, Illinois
Shorb, Ronald L., Guymon, OK
Shotwell, Edna, Abilene
Sibley, W. R. “Dub”, Jr., M.D., Abilene
Sikes, Arlas, Brownwood
Sikes, Dorothy Nell, Brownwood
Sloan, Ross, Breckenridge
Smith, Albert L. “Smitty”, Abilene
Smith, B. Brown, Rotan
Smith, John & Lou Edith, Del Rio
Smith, Lee, Knox City
Smith, Shelley V., Abilene
Smith, Shirley S., Abilene
Smith, Spencer D., Stuart, FL
Smith, Wesley Cole, Abilene
Smith, William C. “Bill”, Lovington, NM
Snowden, Bill, Abilene
Snyder, James, Baird
Spreen, Ralph, Ballinger
Sproul, W. C. “Bill” & Bettie, San Angelo
Stanford, T. Rucker, Lyford
Stansberry, M.K. & Louise, Goldthwaite
Stevens, Perry, Fredericksburg
Stevens, Ruby M., Fredericksburg

LEGACY of LOVE *previous honorees • 1953 to 2022*

Stokes, Aubrey, San Angelo
Stokes, Wave, San Angelo
Stubbeman, David Graves, Abilene
Swain, Cora, Brady
Swann, Daisy Bell, Coleman
Swann, Sam, Merkel
-T-
Talley, Jeanette, San Angelo
Taliaferro, Patty, Abilene
Taliaferro, Scott Leeth, Abilene
Tate, A. A., Aspermont
Tate, Frances, Abilene
Tate, James Milton, Sr., Abilene
Taylor, Bryant, Abilene
Taylor, Doris, Abilene
Taylor, Homer K., Sweetwater
Taylor, James Holton “J. H.”, Abilene
Taylor, Mabell Black, San Angelo
Terry, Jim, Sterling City
Thomas, George Allen, Roscoe
Thomas, John G., Breckenridge
Thorp, Rena, Mertzon
Thurber, W. R. (Bud), Hereford
Tise, Thomas Earl & Paula, Wimberley
Tripp, Jacquelyn Sue (Suzy), Brady
Tripp, Rick, Brady
Trusler, Carl, M.D, Abilene
Trusler, Barbara, Abilene
Tucker, Clarence E., Abilene
Tucker, Eva Camuñez, San Angelo
Tucker, Walter & Bessie Mae, San Angelo
Turnbo, Kenneth Hardy, San Angelo
Turner, Geraldine, Sweetwater
Turner, J. Paul, Sweetwater
Tuttle, Judge Miller, Breckenridge
-V-
Valkenaar, Roger, Abilene

Vanderstucken, Joseph, Sonora
Vanderstucken, Mabel, Sonora
Vaughn, Oleta, Claude
Veak, Jessie L., San Angelo
Vinson, J. Willard, Abilene
Vinson, Mrs. J. Willard (Ione), Abilene
Voit, Barbara Stowbridge, Abilene
-W-
Wadley, Luverne, Abilene
Wakefield, Doris Virginia, Fort Worth
Wakefield, Loyd B., Fort Worth
Waldrip, William “Dub”, Lubbock
Walker, Dudley, Lubbock
Walker, Dr. James & Mary, Brownwood
Walker, Maurine, San Angelo
Walker, Norris & Leoma, Pampa
Walker, Mrs. Vernon, Sweetwater
Wallace, Bilby, Snyder
Warren, Frances E., Abilene
Warren, Robert E., San Angelo
Wash, George, Sweetwater
Waters, Aldean “Al”, San Angelo
Waters, Clara Nell, San Angelo
Watson, Guy, Abilene
Watson, Jack D., Abilene
Watts, Winnie Mae, San Angelo
Waynick, Pam, Eastland
Weber, Robert “Bob”, Granbury
Wells, A. E. “Poly”, Abilene
Wells, Pauline, Concho
Wells, Zieta Guest, Abilene
Werner, Monroe E., Ballinger
West, James H., Stamford
Wetzel, Robert Leon, Brownwood
Whaley, Earl & Jessie, Hamlin
Wheeler Kennedy, Margaret, Abilene
White, Grace Katherine, Abilene

White, G. Rollie, Brady
White, S. A., Abilene
Whittenburg, W. F. “Bill”, Graham
Wilder, Maurice & Mirtie, Midland
Willberg, Ben A., Paint Rock
Willberg, Wilma “Sweetie”, Paint Rock
Willett, Troy, Rising Star
Williams, Janey Pearl, Abilene
Williams, Jesse G., Woodson
Williams, R. C., Abilene
Williams, Verna Mae, Woodson
Wills, Emma Louise, Abilene
Wilson, Alpha L., Abilene
Wilson, Duncan C. O., Jr., Ft. McKavett
Wilson, Frank V., Abilene
Wilson, Patricia Hope, Fort McKavett
Wise, Oscar & Lena “Babe” Wise, Clyde
Wolfe, Raymond M., Dallas
Wooten, J. W. “Dub”, Abilene
Wooten, M/M Pink, Abilene
Wooten, Ruth, Abilene
Word, Selma, Knox City
Word, Willie Elizabeth, Cisco
Wylie, Conda, Ballinger
Wylie, Edna Odom, Ballinger
-Y-
Yates, Jane Fowler, Kingsland
Yates, Tom, Kingsland
Yaws, Dick, Fort Worth
Young, Bennie, Abilene
-Z-
Zentner, James Robert “Bob”, San Angelo



est.

March 27

1994

LEGACY of LOVE WALL

West Texas Rehabilitation Center created its Legacy of Love Wall to perpetuate the memory of individuals whose love and generosity during their lifetime had an especially meaningful impact on the organization. On March 27, 1994 at the first Legacy of Love ceremony, 134 names were placed on the memorial wall. Since that time, a ceremony is held in the spring of each year to add names of special Rehab friends who have completed their earthly journey in the past 12 months.

During their lifetime, each honoree found his or her own unique niche to demonstrate an extraordinary commitment to West Texas Rehab's mission. Some were volunteers. Many repeatedly made significant financial contributions to operations and/or capital improvements projects. Many served on the organization's board of directors. Still others were longtime, dedicated employees. Some of these wonderful people served the organization in more than one of those roles.

Regardless of the difference in gifts they individually brought to West Texas Rehab, all of the people whose names appear on the Legacy of Love Wall have three things in common: (1) during their lifetimes, they contributed to the development of a highly respected, visionary organization; (2) they provided love, compassion, and support to patients and staff; (3) they set a standard for excellence in patient care and personal integrity that inspires everyone associated with West Texas Rehabilitation Center to seek ways to add their own amazing Legacy of Love.

MEMORIALS GIVEN in 2022

- A-

Lamoine Abbott, San Angelo
Sharla Gordon
Roy and Margaret Green
David Harlow
Grady M. Harlow
Jo Nell Harlow
Jim and Louise Jones
Mike and Glinda Martindale
Lee Taylor
Nancy Abel, Abilene
Patty and Greg Knight
Larry Ackers, Lubbock
Bill and Linda Andrews
Lewis and Sybil Ackers
Bill and Linda Andrews
Roy Helen Mingus Ackers, Abilene
Mr. and Mrs. John A. Mingus, III
Jerry Adams, Tuscola
Donna Adams
Marshall and Deann Eaton
John Adams, Jr., Petersburg
Karry and Susan Owens
John G. Adams, Jr., Maryneal
Howard and Jewel Rogers
Ruth Adams
Jean Herring & Family
- Theresa (Terry) Elizabeth Marx Adams, Ozona**
Tommy and JoNel Stokes
Anita Adcock
Mr. Timothy Adcock
Terry Ake, Tuscola
Mrs. Debbie Ake
Mike and Lynn Pueschel
Dorothy Aldridge, Goldsboro
Dick and Margaret Atkins
Glenda Alexander, San Angelo
Ms. Bertie J. Kinard
James Michael (Mike) Alexander, Abilene
Bill and Linda Andrews
Mr. John R. Caldwell
Tommy Morris Agency
Jerri Hills Alexander, Abilene
Bill and Linda Andrews
Jim Alexander, Abilene
Mr. and Mrs. Gary R. Ackers
Bill and Linda Andrews
Tucker and Gina Bridwell
Rob and Peggy Brown
Mr. David L. Buhrmann
Ronald and Lorilei Butler
Mr. John R. Caldwell

- Paul and Kelly Cannon
Joseph and Jo Canon
Tim and Julie Childs
Dian Graves Owen Foundation
Cheryl Dobson
E C Tool & Supply, Inc.
Bob and Laurie Eagle
First Financial Trust and Asset Management Company
Jim and Weezie Fitzhugh
Mrs. Holly Frizzell
Mike and Mary Lou Garrett
Sam Gaskill
Bob and Mary Gee
Mrs. June Gill
Lawrence and Mary Gill
Mr. and Mrs. Woody Gilliland
Lee and Callie Hampton & Family
Harry W. Bass, Jr. Foundation
P. J. and Betsy Heimermann
Lee and Laura Lea Henson
Brad and Erin Hicks
The Hutt Family
J. M. Parker Foundation
David and Kelly Jefferies
Bubba and Penny Klostermann
Jerry and Dee Lackey

MEMORIALS GIVEN in 2022

- Mr. Herman R. Lloyd
Mrs. Mary J. Loyd
Mr. Jeff Luther
Connie Maberry
J. V. and Betty Martin
Steve and Kelly Martin
Mrs. Fran Massengale
Mr. Jerry E. Matthews
Kade Matthews & Family
Raymond and Gloria McDaniel Quasi Endowed Donor Fund
Mr. Ray McGlothlin, Jr.
Mr. Paul Melton
Earl and Tricia Michie
Robby and Deana Morris
Carrie and Ella Myers
John and Nancy Nichols
Martin and Lesli Nichols
Mr. and Mrs. Greg Pitzer
Elizabeth Polk
Nelson and Sonya Quinn
Harry and Charlotte Reaugh
Austin and Callie Roeder
Mrs. Lynn Roeder
Ann Schroeder
Cactus and Erin Schroeder
Bill Schumacher and Kay Frost
Scott and Michelle Senter
Mr. and Mrs. Steve Senter
Glen and Marelyn Shedd
Shelton Family Foundation
Steve and Debbie Smith
Jim and Kim Snyder
Mr. and Mrs. Stephen Suttle
Texland Petroleum, Inc.
Tommy Morris Agency
Zane and Mary Travis
Sandy and Shelly Utlej
Mrs. Tiffany Wagstaff
Kirk and Laura Whitehurst
Don and Beverly Wright
All Our Loved Ones Who Have Passed
David and Tammie Lynn
Cathy Allen
Roy and Carolyn Vick
Codie Allen, Abilene
Scotty and Sally Goldsmith
Diane Allen, Coleman
Jerry Allen
Minnie Altizer
Mrs. Diltzie Edmondson
Kathleen Bishop Amos, Eden
Anonymous
Craig Ancinec
Charles and Nancy Palmer
Norris and Mary Smith Anders, Abilene
Mrs. Ann Nickell
John (Rich) Anderson, Gail
- Mrs. Diltzie Edmondson
Linda Ann Anderson
Myron and Patsy Mays
Robert Anderson
Howard and Jewel Rogers
Arch Andrews, Archer City
Mrs. Patsy Stowe
Jack and Florence (Ackers) Andrews, Abilene
Bill and Linda Andrews
William (Bill) Lanier Archer, San Angelo
Lee and Candyce Pfluger
Patsy Ruth Arledge, Abilene
Larry and Frankie Beauchamp
Ms. Irene Graham
Max, Chey and Bex Graham
Mrs. Shirley Graham
Zane and Reannon Graham
Martha A. McDaniel
Bill and Linda Neeley
Philip Arledge, Abilene
Mrs. Betty S. Arledge
Vernon Maxwell Arrell, Austin
Mrs. Betty Arrell
Rocky Arrell
Claudia Chaffin
Jim Bob and Kelly Clayman
Ms. Claudia Clinton
Mrs. Bobbie J. Estes
Rick and Lynda McElroy
Ron and Joellen Simmons
Kit L. Arrott, San Angelo
Greg and Robin Allcorn
Family of Kit Lee Arrott
Joe and Su Henderson
Dee Lackey
Palmer Feed & Supply
William (Scooter) and Nancy Scott
William and Cyndi Seger
Judith Serkin
Vaughn Ranch, LLC
Clay and Laura Whitley
Joe R. Ash, Robert Lee
Eugene and Letha Fullwood & Hope
Winton and Virginia Milliff
Boone Askew
Ms. Joann Wilson
David Duncan Atkinson
Mrs. Suzanne Click
Polly Austin, Breckenridge
Mike and Lytane Parker
Tracy Autry
Mrs. Alana Brudney
Elizabeth Marie Aylor
Ms. Glenda Aylor
-B-
Kay Babington, Abilene
Bubba and Penny Klostermann
Troyce Bagley, Hawley

- Rodney and Debi Kay Goodwin
Mickey and Janice McCarty
Milton Bagwell
Ben G. and Molly Scott
Rhonda Bahlman
Mike and Mary Lou Garrett
Bob Bailey
Elizabeth Polk
Debi Bailey
Lloyd and Barbara Jones
Don Bailey, Hamlin
Mr. Arlon Baize
Vick A. Burk
Larry and Linda Callan
Mickie and Jean Diersing
Mrs. Ruthie R. Lawrence
Maury and Susan Moore
Mrs. Glenda Pritchard
Vicki Harris Sconce
Ms. Nancy Vines
Donald Bailey, Bronte
Jerita Taylor
Robert L. (Bob) Bailey
Ms. Darleene Sims
J. Allen Baird, Fort Worth
Baird Garrett
Betty B. Garrett
Lisa Garrett
Jacob Baird
Mrs. June Baird Garrett
Peggie and Danny Hoelscher
Jeffrey N. Baird, Abilene
Mrs. Kathy D. Baird
John W. Baird, Jr., Abilene
Mrs. Kathy D. Baird
Ronny Baize
Paige and Sue Baize
Zack Baize
Paige and Sue Baize
James (Jim) Baker, Dimmitt
Mrs. Rebecca Howell Baker Family
Sue Bakker, Eastland
Jeff and Reba Bakker
B. E. Baldwin
Mrs. Ann L. Baldwin
Marie F. Baldwin
Cathi Bachik
Willie F. Balencia, Sr.
Jordan Cattle Auction
Allie Balko
Dale, LeeAnn, and Katie Greene
Patsy and Tommy LaFon
Thelma Ball
Mr. Eugene Ball
Mrs. Annetta Farris
Glenn and Valerie Rodriguez
Texas Bank
Lee Ballard
Mr. and Mrs. Parker Stewart

MEMORIALS GIVEN *in 2022*

Wayne Bandy, Hillsboro
Mr. Robert A. Langford
Elizabeth Ann Barker, San Saba
Jordan Cattle Auction
Stacy Jo Barkis
David and Gwen Ocker
Monty Barrett, Lantana
Phil and Patsy Wright
Doris Barron, San Angelo
Family of Doris Barron
Mr. and Mrs. R. D. Barron
Joe and Su Henderson
Gary Batte
Lloyd and Barbara Jones
Lendon Bauer
Jordan Cattle Auction
Roger Bauernfeind, Abilene
Paul and Barbara Bauernfeind
Brian Garrett Baugh
Vick A. Burk
Mrs. Tennie J. Cade
Monte and Patti Morrow
Shirley Baxley
Jerita Taylor
Joyce Bayer, Abilene
Mr. Joseph Bayer
Bernard A. Beach, Rowena
Randy and Karla Byrd
Helen Aliene Bunker Bean, Ozona
Carmen Childress
Tommy and JoNel Stokes
Mr. and Mrs. Ben Stribling
Annette Beard
Mr. and Mrs. Ronnie O’Neal
Glenn G. Beard, Abilene
Mrs. Joy Beard
Karen Denton (Katy) Beard, Abilene
Bill Schumacher and Kay Frost
Bob Beck
Don and Doty Benningfield
Edith Beck, Seymour
Mr. Harold Beck
Wayne Beck
Ms. Christy Paulk
Bob and Peggy Beckham
Paige and Sue Baize
Lynn Beckham Marderosian
Mona Beckham
Ms. Paige Foster
Peggy Hardaway Pattillo Beckham, Abilene
Mr. Arlon Baize
Paige and Sue Baize
Family of Peggy Hardaway Pattillo Beckham
Beltway Park Baptist Church
Tucker and Gina Bridwell
Rob and Peggy Brown
Mr. Dewayne E. Chitwood

Billy and Kathleen Davis
Dr. and Mrs. Ted C. Dyer
The Estes Family
Linda and Allan Frizzell
Ms. Christy Hamilton
Gayle Browne Hansen
Harry W. Bass, Jr. Foundation
Gilbert and Dottie Korman
Lionweed Productions, Inc.
Steve and Kelly Martin
John McLeod
Mr. and Mrs. Bobby Miers
Robby and Deana Morris
Fabian and Peggy Palitza
Elizabeth Polk
Cactus and Erin Schroeder
Bill Schumacher and Kay Frost
Scott and Michelle Senter
Jim and Kim Snyder
Spence and Sandra Spencer
Texland Petroleum, Inc.
Mrs. Tiffany Wagstaff
Bill and Helen Wishard
Craig and Jenny Young
Wes Beckham, Abilene
Ms. Paige Foster
Neil A. Beckmann
Jordan Cattle Auction
Teddy Bedwell, Clyde
Mrs. Carol Bedwell
Seymour Beitscher, Abilene
Mrs. Gay Beitscher
James Franklin Belk
Alvin and Janice Niehues
Jimmy Belk, Eldorado
Mr. and Mrs. Mike G. Calcote
Hyman and Gina Sauer
Mr. and Mrs. Mike Sproul
Dean and Vickie Williams
James David (J. D.) Bell, Pecos
Mrs. Anne Pilgrim
George E. Bennett
Mrs. Rebecca Howell Baker Family
Kathleen Bennett, Rotan
Mr. Red Bennett
Virginia (Pat) Benson
FBC Baird Deacon Body, Galen Bogard
Paula Berry, Abilene
Mike and Mary Lou Garrett
Gilbert and Dottie Korman
Ralph Berry, Cisco
Mr. David R. McCaghren
Sally and John Berry
Mike and Mary Lou Garrett
Wayne O. Bibb
Mrs. Gretta Warren
Clarisse and Elisse Biddison
Mike and Lytane Parker

Emily Bierschwale, Junction
Mrs. Kay Green
Charles Bingaman, Abilene
Dale, LeeAnn, and Katie Greene
Patsy and Tommy LaFon
Ada Lou Bird
Ray and Earline Bagby
Lylythed Grace Birge, San Saba
Jordan Cattle Auction
James Biter
Wes and Lisa Beck
Myla H. Black, San Angelo
Carter and Laura Behrens
Ronnie H. Blackmore, Abilene
Mrs. Carolyn Blackmore
Dempsey and Kara Malaney
James and Diane McShan
Lynn and Pat Mendenhall
Ms. Carla Tankersley
Don Blackwell
Rodney and Debi Kay Goodwin
Jimmy Blackwell, Clyde
Mrs. Becky Blackwell
Billy Derrel (Bill) Blair, Blackwell
Mr. Johnny G. Copeland
Earl N. Blair, Canyon
The Hernandez Family
Jerry Blair, Millersview
James and Arletta O’Shields
James Blakey, Lubbock
Boren Family LLC
Alvis Eugene Blankenship
Toby and Tammie Virden
Wanda Gale Blatz, Knickerbocker
Mrs. Lorece Baze
Family of Wanda Gale Blatz
Jean Blevins, Breckenridge
Mark and Trissie Dempsey
Mike and Lytane Parker
Carol A. Bliznak, Abilene
Dr. Johnny Bliznak
Blondie and Wolfman
Mr. Victor Gutierrez
Benny Boatright, Abilene
Mrs. Donna Boatright
Margie Bodine
Mr. Jerry Bodine
Patricia Ann Bogar, Abilene
Marylan K. Bacon
R. T. Bogle, Anson
Mr. and Mrs. John E. Carter
Polo Boisse, San Angelo
Mrs. Sharalee Pierce
Charlie and Sandra Bolch, Temple
Mrs. Lora Blacklock
Larry H. Boles, Breckenridge
Ms. Shalley Boles
Mr. and Mrs. Dick Garcia
James and Donna Wade
Nancy (Susie) Bolf, San Angelo

MEMORIALS GIVEN *in 2022*

Mark and Lori Ball
Ms. Jane Robertson Blanch
Mrs. Jean Bolf
Four L Cattle Company
David and Karen Grantham
Chris and Sharon Hasty
Johnson’s Funeral Home
Kevin and Victory Stewart
Patsy Stewart
Paul and Linda Swaim
Mr. and Mrs. Woody Winn
Susie Bolf
Ms. Margo R. Templeton
Aaron Lee Bolin, Stamford
Buddy and Sharon Bolin
Ted Bonds
William and Carolyn Cooper
Hershal M. Bonnett
Mrs. Jeanene Bonnett
M. M. Booe, Munday
Mr. Alvis Ashley
Shelly Johnson Booe
Johnny Harkins Family
Barbara (Bebe) Boren
John Boren and John Boren Family
Thomas Oscar Bowden, San Saba
Grant and Patsy Hall
Jordan Cattle Auction
A. D. Bowen, Abilene
David and Kay Alexander
Mrs. Betty S. Arledge
Drs. Joe and Susan Darsey
Elizabeth Polk
Texland Petroleum, Inc.
Lupe Box
Mr. Abe G. Sotelo
Charles Easton Boyd, Wingate
Paige and Sue Baize
Jadyn Boyd
Ms. Christy Paulk
Joann Ruth (Orr) Boyd, Abilene
Tom and Marian Boecking
John and Janice Brockman
Todd and Julie Cunningham
Ms. Mary Lou Hutson
Don and Cheryl Lackey
Mrs. Mary J. Loyd
Alan and Cindy Scott
Linda Boyd, Abilene
Ms. Sharron Ann Sibley
Suzie Boyd, Merkel
Bob and Jenny Carothers
Alfrieda Braden, San Angelo
Mr. and Mrs. Kenneth Braden
Charles Donald (Don) Bradford, Ranger
Mr. Robert A. Langford
Billye Bankston Bradley, Eastland
Ron and Marty Baker

Earl Clarence Bradley, Jr., Eastland
Border Marketing, Inc.
Kenneth Bradshaw, Merkel
E C Tool & Supply, Inc.
John C. Brady, Merkel
Mrs. Diltzie Edmondson
Mike Brady
Mrs. Linda Brady
Jim B. Brame, Eldorado
Mrs. Betty Jane DeVerter
Kent’s Automotive
Hyman and Gina Sauer
Sue Bramhall
Sterling and Alicia Cole
Chase and Kay Holland
Steve and Kelly Martin
Brad and Cyndy Morris
Clair Branch
Bill and Linda Andrews
Billie J. Breeding, Abilene
Barbara J. Birchfield
Mr. Vernon B. Breeding
Sheila Crowson
Deborah Holland
Steve Stewart
Phil Brewer
Etheredge Cattle Company
Leo Brewster, Fort Worth
Mr. and Mrs. George Harrison
Sue Brinkley, Abilene
Bob and Delora Hutchins
Alice Brinkman
Bubba and Penny Klostermann
Steve and Kelly Martin
William Robert (Bob) Brockman
Jordan Cattle Auction
Craig Brooks
Kirk and Patsy Cleere and Family
Sendero Drilling Company, LLC
Sarah Brooks, Abilene
Mike and Mary Lou Garrett
Fay Vick Theriot Brosig, San Angelo
Roy and Carolyn Vick
Donna Brown
Dickie and Janna Brendle
Joe N. Brown, Sonora
Mrs. Goldie Brown
Sue Ann Brown
Blair and Jane Cook
John and Sharon Foster
Mike and Sherrie Holman
Robert and Louise Lockhart
Cyndi Browne, Colorado City
Mr. Michael Browne
Ron and Janie Holt Giddiens
Mrs. Jan Owens
Butch Stout Family
Katy Bruce

Patty and Greg Knight
Grace Bryant, Snyder
Steve and Kelly Martin
Lockett and Clova Bryson, Rochelle
Kevin and Lisa Kennedy
Barry Burk
Mrs. Diltzie Edmondson
John William Straughan Burks
Buddy and Torey Fisher
Kathleen (Kathy) Burleson, Seminole
Tommie Moore
Inez Tucker
Wilson H. Burleson, Abilene
Randy and Barbara Carson
Randy and Amy Lane
Joetta Burnett, Haskell
Mr. Pete Bowen
Mrs. Evelyn Cobb
Cookie Burns, San Angelo
Holland Jewelry Company, Inc.
Jo Helen Burson, Abilene
Mrs. Donna Miller
Billie Ware Burwick, Sweetwater
Ms. Dorothy Burwick
Shay Burwick
Mrs. Sharalee Pierce
Jerry Busbee
Anonymous
Tricia Byerly, Hamlin
Spitzer Animal Health, LLC
Stamford Insurance Agency, Inc.
Lesa Byrd
Mr. and Mrs. Lester Byrd
Melvin Dale Byrd
Doug and Susie White
Paul Byrd
Mrs. Virginia Sellers
Shawn Byrd
Don and Doty Benningfield
Theresa Byrd
Randy and Michelle Schneider
-C-
Carl James (Jimmy) Cahill, Jr., Sonora
Mrs. Linda Cahill
Bess Caldwell
Mrs. Oleta Cornelius
Bill Caldwell
Mr. Scott L. Carey
Benny Ned Callaway, Cross Plains
Linda Brady
Michael and Leona Byer
Mrs. Gaynelle Callaway
Russell Gould
Allen and Rochelle Hughes
Richard and Linda Wilson
Rosalita Calsoncin, Breckenridge
Mr. Robert A. Langford

MEMORIALS GIVEN *in 2022*

Mike and Lytane Parker
Dana Lynn Cammack
Lee and Candyce Pfluger
Mary Campbell
Ms. Janice Morris
Roger L. Campbell
Robert and Janet McFarland
Mr. Rodney D. McFarland
Danny V. Cantu
Mrs. Bonnie H. Miller
Dreda Renee Carpenter, Eola
Linda Miller
Duane and Carolyn Slough
Nettie Oma Ragsdale Carpenter
Jordan Cattle Auction
Pat Carriker, Abilene
Mrs. Diltzie Edmondson
Jim and Robbie Carson
Buddy and Bonnie Baldrige
Stan Carstens, Breckenridge
Mike and Lytane Parker
Doyle Carlton Carter, Abilene
Ms. Charlotte L. Carpenter
Elnor C. Carter, Abilene
Mr. and Mrs. John E. Carter
James Carter, Rotan
Monte and Patti Morrow
Jo Carter, San Angelo
Jerry and Dee Lackey
Jimmy and Barby Nobles
Tommy Carroll Cary, Tuscola
Mrs. Glenda G. Cary
Wanda Davis
Eide Bailly LLP
First Financial Bankshares, Inc.
Mr. J. Robert Stovell
Ronald Ward and Family
Barry Cash, Abilene
Mrs. Diltzie Edmondson
Mickey Cassle, Abilene
Patty and Greg Knight
Arthur Castillo, Lubbock
Cisco and Colleen Castillo
Pam Caswell
Mrs. Diltzie Edmondson
Betty Cavanaugh
Charles and Nancy Palmer
Philip R. Cecil
Mrs. Sally Cecil
Alice Faye (Bugsie) Chacon, Abilene
Mrs. Diltzie Edmondson
John H. Chalmers, Sr., Abilene
Ms. Beverly Chalmers
Margaret R. Chalmers, Denver
Ms. Beverly Chalmers
Stella Mae Blankenship Chalmers, Abilene
Ms. Beverly Chalmers

Elizabeth C. Chant, Eden
Mr. Rodney Chant
C. T. Chappel, Carrollton
Denise Dennis
Mary L. Cheek
Edie Stringfellow
Norman Childs, Marion
Mrs. Marjorie Childs
I. M. Chism, Albany
Mr. and Mrs. Ferdie Walker
Virginia Chitwood, Abilene
Ms. Susan Hancock
Franklin Dee (Frank) Chrane, Abilene
Mr. and Mrs. Dwight Canada
Larry Chrane
Mrs. Pat Chrane
Glen David Churchill, Abilene
Mr. and Mrs. G. H. King
Steve and Kelly Martin
Bill and Lila Senter - The Explorers
Hal Thomas Churchill
Mrs. Deana Reed
Charles Clark, Aspermont
Shannon, Dana, Shae and Jenna Berry
James E. Clark, Baird
Jim and Kim Snyder
Maurice Clark
David and Sandra Mitchell
Marie Clayton, Dublin
Mr. Darrell Richards
B. E. (Sonny) Cleere, San Angelo
Mr. and Mrs. Bill Black
Mrs. Jan Owens
Otha Cleere, De Leon
Mr. Charles Crawford, Jr.
Milton Clegg
Nick and Linda White
Frances Clemence
Chase and Kay Holland
Mollie Hart Clemens, San Angelo
Liz and Devin Bates
David and Katie Harrison
Mr. and Mrs. George Harrison
Jim Lambert
Ann Noble
Truett Smith
Pollyanna and Steve Stephens
Mr. Steve Turner
Marilyn Wilson
Floyd Lewis Clemmer, Baird
Spitzer Animal Health, LLC
Allen Clendennen, Robert Lee
Gary and Sharon Halfmann
Terry Clift
Mrs. Glenda Pritchard
Marjorie Cloud, Abilene
Jeremy and Shannon Cloud
Kay Lynn Clowdus, Abilene
Patty and Greg Knight

Q. T. Coates, Jr., Big Spring
Mr. and Mrs. William Howard Bain, Jr.
Sammy Cockerell, Tye
Mrs. Diltzie Edmondson
Jana Michele Cogburn, Stephenville
Mr. and Mrs. Kenny J. Cogburn
Beverly Coker, Roby
Mrs. Diltzie Edmondson
Duane Coleman
Bill and Linda Andrews
Iva Collins
Mrs. Janice Hammer
James R. Collins
Curtis and Ruby Lesley
Leila Collins, Abilene
Gilbert and Dottie Korman
Lexi Brooke Collins, Munday
Mrs. Jan Carver
Carl Collum, Bedford
Ms. Sharron Ann Sibley
Dan Colombi, Haddonfield
Tanner and Carol Mahan
Judy Colvin, Abilene
Patty and Greg Knight
Bill Schumacher and Kay Frost
Joyce Comeaux
Roger and Sharon Weeks
Justin Condra
Ray and Debbie Ballew
Bob and Nancy Brockman
Reed and Barbara Jennings
James Michael Conley, San Angelo
Jim Grace and Veronica Garcia
Stacy and Chad Greaves
Jim Bass Ford - Lincoln Mazda-Nissan
Sidney and Kathy McCown
San Angelo Cowboy Church
Sam Conway, Albany
Mrs. Sandra Conway
Gary Wayne Cook, San Angelo
Mrs. Evelyn Michalewicz
Patricia Cope
Mr. Steven Cope
Charlie Core, Abilene
Mr. David A. Hammond
Patty and Greg Knight
Catherine Ann Cornelison
Harold and Mary Cornelison
Larry and Jeannie Hall
Mr. and Mrs. Ferdie Walker
Shannon Z. Coryell
Dale Coryell
Keith Corzine, Stamford
Mike and Tammy Sloan
Tommy Cotton
Doug and Susie White
Evelyn Cox
Gary and Evette Orren

MEMORIALS GIVEN *in 2022*

Linda Cox, Amarillo
Mrs. Katrina Phillips
Marcelene Cox, Colorado City
Carter and Laura Behrens
First Bank and Trust
Kirk and Maureen Morris
Ruth Cox, Abilene
Mrs. Wanda L. Stayton
Sandra Kay Kesler (Sandy) Cox, San Angelo
Ms. Lilia Castellano
Mrs. Janie B. Cooper
Mr. Mike Cox
Bowen and ShawnElla Creamer
Eldorado-Divide Soil & Water
Conservation District #247
Wes and Laren (Jost) Green
Scott, Melissa, Grey and Willow Grote
Jack and Katherine Harrington
Glyn, Robbin, Davis, Mackenzie, and
Mason Hutto
Wilbert and Betsy Lehnert
Dina L. Marshall
Alene Moses
Don and Lavon Mosher
Mary Mynatt
David and Deborah Neal
Karen Steelman
Ms. Jane Steffey
Daniel and Judy Thiebaud
Mr. Samuel H. Tinney, III
Arthur and Lorrie Uhl Family
Dean and Vickie Williams
Houston Cozart
Steve and Lesa Hertel
William Eugene (Bill) Craft, Clarendon
Johnny and Jana Trotter
Betty Crawford, Abilene
Dale and Betty Crawford
Ricky Crawford
Marshall and Deann Eaton
Becky Creel
Mike and Mary Lou Garrett
Martha M. Crenshaw, Breckenridge
Lloyd and Barbara Jones
Corey Criner
Mr. and Mrs. J. B. Criner
Larry Crooks, Mount Pleasant
Mrs. Toni Shields
Toby Richards Crooks, Abilene
Bill and Linda Andrews
Mike and Mary Lou Garrett
Lou Crowder, Ira
John Boren and John Boren Family
John Wayne Crowley, Lubbock
Ronald and Connie Ricci & Family
Lee J. Cuba, Barnhart
Mr. and Mrs. Jimmy Baker

Theo Cude
Mrs. Wanda Cude
Donald Joe Culp, Hermleigh
Joe and Sissy Beck
Mr. David Groves
Wayne and Cheryl Winkles
Ed Cumbie, Bronte
Pat and Linda Gladden
Elizabeth Ann (Betty) Cummins, Abilene
Charles and Linda Ezzell
Wes-Tex Drilling Company
Jim Cunningham, Marathon
Cisco and Colleen Castillo
Larry D. Curnutt, Abilene
Mike and Mary Lou Garrett
Steve and Kelly Martin
Marie Currey, Abilene
Mrs. Betty S. Arledge
James Curry
James and Arletta O’Shields
Earline Curtis
Dr. Jim and Susan Wilson
Treldon Cutbirth, Brownwood
Jordan Cattle Auction
Karen Cutrer, San Angelo
Jerry and Dee Lackey
Bettie Lou Cutright, Abilene
Big Country Early Ford V-8 Club
Charlie Cypert, Eden
Mrs. Elizabeth Cypert
-D-
Joann Gentry Dabbs
Dwight and Brenda Dabbs
Kenneth Dacus, Hermleigh
Mr. David Groves
Marvin and Kim McClanahan
Gary and Frances Pieper
Dad
Mr. Raymond Morgan
Randy Daily
Bruce and Carol (dec) Williams
Garland Eugene Daniel, Little River
Carl and Nona Williams
Scotty Daniel, Rotan
James and Sue Branch
Douglas George Daniell, Port Aransas
Mr. and Mrs. Jerry Curry
John Dee Daniell, Crane
Bill and Missie Pittman
Alan R. Daugherty, San Angelo
Ms. Ronda Hampton Toeppich
Bob Daugherty
Butch Stout Family
Earl Davenport, Sweetwater
Ms. Carol Davenport
Billy Davidson
Grant and Patsy Hall

Cotton Davidson
Carl and Nona Williams
Tom Davidson, San Angelo
Mrs. Marolyn Bean
Betty Jo Fare Davis
Lora and Aaron Boone
Susan Hanson
Ms. Bridgette Killgore
Ellen Lassetter
Mike and Glinda Martindale
Michael and Danielle Plumlee
Richard and Debi Plumlee
Caroline Turnbow
Dick Davis
Tex and Barbara Halfmann
James (Jim) Alford Davis, Menard
Lee and Candyce Pfluger
Keith Karsen Davis, Elk City
Mrs. Naomi Dillard
Nancy Wilson Davis, Sonora
Tanner and Carol Mahan
Spitzer Animal Health, LLC
Dorthy R. Dawson, Abilene
Dr. and Mrs. Bill Bruster
Dr. George A. Dawson
June Dawson
Martin and Lucy Dawson
Nan Dawson
Steve and Kay Dawson
Lyndy Dawson Edwards
The Estes Family
Mrs. Phyllis Ewing
First Baptist Church
Mrs. Louise Hargesheimer
Loyd and Brenda Hawthorne
Dr. Sandy Hazelip
Mrs. Esta L. Jeter
Cheryl Johnson
Boyd and Lynn King
Gilbert and Dottie Korman
Mrs. Fleda D. Lambert
George and Angie Lane
Robert and Louise Lockhart
Mrs. Mary J. Loyd
Cody and Misty Mathis
Celeste and Dan, Anne and Alice
Kirk and Shronda Shannon
The McGlothlin Foundation
Peggy Thomas
Gene and Ann Ward
Stephen Williams
Hollis Dean, Wingate
Mr. Larry King
Ricky R. Dean, Winters
Mr. Larry King
Jay and Stephanie West
Bud Dearing, Mingus
Joe and Mary Harrison

MEMORIALS GIVEN *in 2022*

Lee and Freda Deatherage
Ms. Martha J. Murray
Mary Ann DeLacy
First National Bank of Ballinger
Marcy Demel
Reid, Chaucy, and Savannah Cave
Eula Nell Dempsey, Ranger
Mr. Robert A. Langford
Mike and Lytane Parker
A. H. (Chico) Denis, III, Vancourt
Four L Cattle Company
Brenda and Glen Kellermeier
Jerry and Dee Lackey
Jerry and Donna Multer
David and Deborah Neal
Lee and Candyce Pfluger
Allen and Jo Ann Weishuhn
O. H. Denning, Breckenridge
Charles Denning
JoAnn Denning
Alice Keel
Tammy Dennis
Mr. Tim Dennis
Geraldine Denson
Barbara, Tisha, and Todd Harrison
Royce and Marge Dent, Abilene
The Moore Family, Mike and Becky & Brent and Ashley
Camille Badgett Denton, Ballinger
Larry and Merle Kelso
James H. Dibble
Mrs. Betty S. Arledge
L. C. (Sonny) Dillard, Tuscola
Mrs. Naomi Dillard
Dwight Dillashaw
Don and Doty Benningfield
Ekdahl Nelson Real Estate
Doug and Susie White
Ouida F. Lewis DiPetrillo
Sam and Joy Allen
Ali Dodgen
Mrs. Linda Brady
June T. Doggett, Water Valley
Kirk and Patsy Cleere and Family
Barbara Dolloff, Clyde
Dr. and Mrs. Curtis Creach, Jr.
Elsie Lee Donelson
Danny and Brenda Jay
Craig and Nancy Johnson
Mrs. Virginia Williams
Nolan Otto Donop, Mason
Jordan Cattle Auction
Ruth Dotson, San Angelo
Jim Dotson
Virginia Doty
Ekdahl Nelson Real Estate
Ted Roberts
Dorothy Mae (Goree) Dowell, Abilene
Mr. Gordon L. Dowell

Ms. Lisa L. Metcalf
Eva Doyle, O’Donnell
Ben, Michael and Brent Murphy
Jimmy Doyle, Eldorado
Mrs. Nancy Doyle
Paul R. Draper, Jr., Abilene
Mrs. Diltzie Edmondson
Randall Joe Dudley, Merkel
Bill Schumacher and Kay Frost
Dorothy Dueser, Breckenridge
Mike and Cassie Griffith
Frederick F. Dueser, Breckenridge
Mike and Cassie Griffith
Tony Duesterhaus
Sharon A. Duesterhaus
Bobby Duncan
Terry and Janet Franklin
Vada A. Duncan, Brownwood
Mrs. Diltzie Edmondson
Mark Dunlap
Mr. and Mrs. Ronald Holloway
Stella G. Dunlap, Abilene
Bill and Maedene Armer
Mike and Nancy Compton
Donald Lynn Dunn, Abilene
Bill and Linda Andrews
Mrs. Naomi Dillard
Patty and Greg Knight
Nancy Dusek
Stanley and Judy Book
Francis F. Dutton, Junction
Grant and Patsy Hall
Margaret Dutton
Mrs. Rebecca Howell Baker Family
James F. Dyer, II, Fort Davis
Mr. and Mrs. Woody Gilliland
-E-
Phyllis (Jean) Eady
Steve and Julie Cecil
Sterling and Alicia Cole
Steve and Kelly Martin
Colin R. Early, San Antonio
First Financial Bank
Jerry and Dee Lackey
Lee and Candyce Pfluger
Mya Swanson Ebeling
Mrs. Jan Boles
Mebra Dean Lively Eckhoff
Mrs. Kay Green
Jordan Cattle Auction
Mike and Connie Mallett
Bobbie Jean Edington, Coleman
Mr. and Mrs. Jake Knight
Lana Jean Edins, Ovalo
Ace Air Conditioning Company
Kenn and Trish Rhodes, Shannon,
Mina, Kent, Tara, and Keane
Mr. Cal L. Sumrall
Michael Egan, Ballinger
Chris and Elesa Ocker

Phil Egdorf
Bill and Maedene Armer
Dale and Helen Cartee
Erwin and Clara Eggemeyer, Miles
Mrs. Norma Jean Glass
Nila F. Eggleston, Brady
Alton Eggleston
Gaenell Ehrke, Blanket
Dr. Jack Ehrke
Benge Elliott
Mrs. Holly Frizzell
Darryl Elliott
Mr. and Mrs. Jimmy Queen
Lewis Elliott, San Angelo
Lee and Candyce Pfluger
Eddie Ellison
Shannon, Dana, Shae and Jenna Berry
Olien Elmore, O Brien
The Family of Olien Elmore
Otis E. (Otto) Elmore, Abilene
Mrs. Peggy Elmore
Joseph Walter Emery, Cedar Park
Mr. Johnny G. Copeland
Mike English, Aspermont
Shannon, Dana, Shae and Jenna Berry
Jeff and Phyllis Hecht
Mrs. Terri Lipham
Chad Epley
Charla Story
Patrick Nelson Eppler, Mason
Jordan Cattle Auction
David Ervin, Graham
Mrs. Sharalee Pierce
Robert Erwin, Snyder
Doug and Susie White
Lupe Escobar
Dean and Rama Jones
John L. Estes, Jr., Abilene
Mr. James Estes
Tommy K. Estes, Abilene
Dale and LeAnn Doby
Mike and Mary Lou Garrett
Bernice Etter, Abilene
Mr. Ronnie J. Etter
Sidney M. (Sid) Eubanks, Bronte
Mrs. Oleta Cornelius
Billie Evans
Bob and Delora Hutchins
-F-
J. R. Fain
Ms. Ronda Hampton Toeppich
Tina P. Fairfield
Mr. and Mrs. Gary Prescott
Bonnie Fairy
Allen and Gwen Andrae
Billie Jean Fancher, Bronte
Jerita Taylor
Brandon Clay Faris, Midland
Bob and Nancy Brockman

MEMORIALS GIVEN *in 2022*

Ms. Maggie Davis
Callaway and Ronda Hall
Ashley Bible Settles
Charlotte Farmer, San Angelo
Steve and Kelly Martin
Will Farris, San Angelo
Gaines, Gigi, Patrick, Meagan, and Blair Magee
Robbie Ann Gilliam Faught, Horseshoe Bay
Jim and Patty Debenport
Kristen and Jimmy Debenport
Libby and Jeff Nicodemus
Jerry and Kay Tinkler
Michael (Stephen) Faulkner, II, Abilene
Mrs. Lynda Faulkner
Pedro Feliz
Mike and Mary Lou Garrett
Billye Jean Ferguson, Big Lake
Lee and Candyce Pfluger
Melvin Ferguson, Temple
James and Arletta O’Shields
Pamela R. Ferguson, Abilene
Ms. Wanell Shaw
Emabal Baker Fielder
Mr. Robert C. Waller
Linda Jean Fielding
Ms. Carol M. Santry
Lowell Gene Finch, Montgomery
Paige and Sue Baize
Alicia Brook Finley, Loraine
Gary and Margie Finley
Dorothy Mae Cope Finley, Abilene
Ms. Shirley Clifton
Mr. Richard D. Cope
Mr. Chance Finley
Gary and Margie Finley
Ms. Jill Holt
Ron and Jena Jackson
Ms. Janet Moore
Scott and Michelle Oldenburgh
Ms. Emma Jean Pool
Barbara Robillard
Mr. and Mrs. Cliff Watkins
Mrs. Lyn A. Yater
Kent Finley, Coleman
Mr. David Groves
James L. Fisher, Abilene
Mrs. Jane Fisher
Greg Fitzhugh, Ovilla
Mrs. Janis Slampa
Stephen, Kim, and Chloe
Belinda Fleming, Menard
Tanner and Carol Mahan
Rex Tyler Fleming, Abilene
Mr. Garner Roberts
Clyde Fletcher, Tuscola
Blue Cross/Blue Shield of Texas

Virginia Flores
Mr. Manuel F. Garcia
Happy Fluitt
Mike and Connie Mallett
Louan Cox Flynt, Lubbock
Mr. Robert A. Langford
C. J. Ford
Ms. Elaine Johnston
Jim Teal Foster
Jordan Cattle Auction
Oneta Jo (Nana) Foster, Sterling City
Fred and Jane Chandler
Sterling and Alicia Cole
Kailee Denise Fowler, Cabot
Mrs. Bonnie H. Miller
William Irby Fox, Abilene
Mr. and Mrs. Ferdie Walker
J.B. Fraley, San Angelo
Kirk and Patsy Cleere and Family
Kristy Franchini, Albuquerque
George and Jenean Stanfield
Sam and Dardanella Franco, San Angelo
Jack and Becky Stewart
Reyes Franco, Sweetwater
Stan and Annette Creed
Loraine Fraser, Aspermont
Shannon, Dana, Shae and Jenna Berry
Jeff and Phyllis Hecht
Jake Frederick, Abilene
Mrs. Sally Frederick
Ronnie Dell Freeman, Trent
Mr. and Mrs. Jeff Blanks
Mr. David Dickerson
Steve and Robbie Shugart
Sharron Lynette Freitag, Mertzon
Mrs. Janice Douglas
William (Scooter) and Nancy Scott
Hubert Frerich
E. H. and Cecilia Brosig
Mrs. Dottie Frerich
Jerry and Dee Lackey
Mrs. Sylvia Rollwitz
Charles (Charlie) Henry Frey, Ballinger
Clifton and Maxine Michalewicz
Mrs. Joanna Parrott
Sherlean Frost, De Leon
Mr. Charles Crawford, Jr.
Jimmie D. Fuentes, San Angelo
Becky Fuentes
Linda Fulgham
Rodney and Debi Kay Goodwin
Delbert Gene Fustos, San Angelo
Winifred and Jeanine Fustos
Winifred Fustos, San Angelo
Jeanne Martineau

-G-
Christie Galbraith, Abilene
Mr. Gerald A. Galbraith
Ms. Sharron Ann Sibley
Danny Galle
Phil and Patsy Wright
Marilyn G. Galusha, Abilene
Elizabeth Polk
Les Gandy
Wes and Lisa Beck
Jason McKinney
Ronnie and Brenda McKinney
Travis McKinney
Adell Gannon
Steve and Donna Kidd
Karen Gantz
Milene Crossman
Winford Gardner, Clyde
Mrs. Pat Chrane
Jack Gartman, Brady
Mr. Joe Kim King
Royden J. (Jackie) Gartman
Mr. and Mrs. Mike Whitworth
Ryder Wayne Gass
Dickie and Janna Brendle
Tex and Barbara Halfmann
Norma Alvina Geistweidt, Doss
Jordan Cattle Auction
Danny Gholson
Mrs. Glenda Pritchard
Leah Gibbs
Kent and Kathy LeFevre
Wesley Gibbs, Bronte
Vaughn Ranch, LLC
Morgan Gibson
Lloyd and Barbara Jones
Sue Sudduth Gilbreath, Lubbock
Johnny Harkins Family
Bob Gill, Abilene
Randy and Sheila Lloyd
Lynn Gillespie, Abilene
Mrs. Jane C. Appling
Donna Gillis
Lynn Fitzgerald
Vaughnie B. Gilly, San Angelo
Mickey and Pamela Abbott
Joseph and Jo Canon
Mrs. Kay Ella Gilly
Holland Jewelry Company, Inc.
Jimmy and Barby Nobles
Ms. Linda O’Neal
Mrs. Carol Rigby
Mr. and Mrs. Michael Stringer
Jerry and Kay Tinkler
Mr. and Mrs. Clyde Warren
Lindsey Young
Maxine Glander, Kermit
Dale, LeeAnn, and Katie Greene
Patsy and Tommy LaFon

MEMORIALS GIVEN *in 2022*

Edgar and Alice Glass
Roger and Melissa Glass
Janet Jordan
Clayton Glick
Mr. and Mrs. Ronald Holloway
Tyler Golson
James and Chrissi Hail
Sue Gomez
Mr. Louis Gomez
Tony and Trisha Gomez
Mike and Mary Lou Garrett
Larry Goodall
Debra King
Jerry Wayne Goode, Merkel
David and Donna Gist
Hazel Goodgion
Mrs. Jo Ann Moore
Arthur Goolsbee, Abilene
Dr. Robert and Trina Fink
Bill Gosney, Junction
Jean Herring & Family
Lesa Harlean Cutbirth Gossett
Tim and Rebecca Howell
Tom and Laura Howell
Danny Gotcher, Fredericksburg
Mrs. Paula Blackburn
Ms. Connie Boehm
Mrs. Pat Chrane
Jack Clem
Sarah Darneille and Ken Breaker
Will and Ricki Davies
Ms. Linda Davis
Dian Graves Owen Foundation
Cydney Donnell
Ms. Melissa Eastman
Edmund Jenschke, Inc.
Chad and Autumn Fauchaux
Ms. Helen K. Gazewood
Shawn and Stephanie Gillen
Jack and Diana Gotcher
Mrs. Karen Gotcher
Mrs. Bonnie Howe
Steve and Nadine Inglis
Ms. Melissa Jacobs
Jay and Patty Jones
Joseph Financial Partners
Keith and Kristi Kaiser
Rodger and Nan Kennedy
Ms. Julie Ligon
Mary Austin Moody
John and Kathy Pipkin
Jon and Nancy Sewvell
Marina and Jim Siepiela
Ray and Sharon Sikes
Frank and Shirley Sloan
Daryl and Patti Wendt
Dave and Toni Wildman
Guy and Nancy Williams
Paul Gothard, Blackwell
Mr. and Mrs. J. C. Stroman, Jr.

Edna Grace Hempel
Mr. John Fritts
Doris Gragg, Abilene
Mr. Ken Gragg
Clay B. Graham, Loraine
Mrs. Shirley Graham
Ken Graham, Loraine
Mrs. Shirley Graham
Larry Wade Graham
Jordan Cattle Auction
Mike Graham
Becky Townley
Steven Graham, Anson
Jerald and Renate McLemore
Wanza Graham, Loraine
Annette Cooper
Mike and Mary Lou Garrett
Mrs. Shirley Graham
Ruth Kelly
Bob and Della Mae Vickers
Cason Grant
JoAnn Ringhoffer and Karen Combs
Faye Grant, Abilene
Mr. Bill Grant
R. Jack Grant, Abilene
Mrs. Betty Grant
Robert Grant
Kirk and Patsy Cleere and Family
Jason Gray, Clyde
Charles and Nancy Palmer
Mike Gray
Ms. Betty Lord
Billy Green, Eldorado
Mr. Chris McCravey
Dean and Vickie Williams
Don Greenlee, Colorado City
W. T. and Beth Watkins
Clint Gregory
Wayne and Cheryl Winkles
Carolyn Griffin, San Angelo
Patrick and Kari Bridges
Johnny and Laura Burkhalter
Christina Knutson
Carl and Pat Schlinke
Don W. Griffis, San Angelo
Lee and Candyce Pfluger
Homer L. Grimes, Jr., Sweetwater
Doug and Betty Richards
John Grimes
Mr. Phil McCormick
Leola Grote, Mason
Mr. Walton Grote
Leonard Groves
Eddie and Andi Thornburg
Karen Grozier
Rory and Amy Barros
Patsy Shuffield Grube, Brady
Curtis Counts
James (Jim) Guess, Coleman
Buddy and Bonnie Baldrige

Donald and Judy Cradduck
Marshall and Deann Eaton
Mrs. Ann Guess
Edward and Mary Katherine Hurst
Steve and Donna Kidd
Doyle, L’Rae, Cutter, and Callie Lee
Robert Gully
Stanley and Judy Book
Mike Gutterson
Mrs. Diltzie Edmondson
-H-
Stanley Hackfeld, Loraine
Max, Chey and Bex Graham
Ruth Kelly, Annette Cooper
Bob and Della Mae Vickers
Joanna Hafer, San Angelo
Pastor Jasper W. McClellan
Lawson Hager, Jr.
Mike and Mary Lou Garrett
Bozy Hagler
Piet Fourie
Jill Jacoby
Donald Hale, Cisco
Ms. Patsy Bryant
Roger Morris (Roddy) Haley, Anson
Gerald and Patsy Franks
Earl Halfmann, Vancourt
Liz and Devin Bates
Brenda and Glen Kellermeier
Jerry and Dee Lackey
Jerry and Donna Multer
Mrs. Kaye Schwertner
Texas Bank
George Halfmann, San Angelo
F. G. and Joan Brown
Brenda and Glen Kellermeier
Norbert Henry Halfmann, Paint Rock
Peggie and Danny Hoelscher
Sherry Ann Halfmann, San Angelo
Mr. Gary Halfmann
Casey Cooper Hall
Mrs. Yvonne Reves
Kay Hall, Brady
Thomas and Carolyn Karger
Larry Hall, Abilene
Tommy and Sarah Burrus
Mrs. Michelle Prewit Cranor
Diana and Lawson Davis
Mr. and Mrs. Woody Gilliland
Rodney and Debi Kay Goodwin
Mr. Robert A. Langford
Steve and Kelly Martin
Bill Schumacher and Kay Frost
Robert Hall
Ms. Erika Hall
Nancy Hallmark, Ballinger
Mrs. Darlene Smith

MEMORIALS GIVEN *in 2022*

Verl Hallmark, Brownwood
Rotan Class of 1958
Robert Hamblen, Paint Rock
Kirk and Patsy Cleere and Family
David Rex Hamilton, Abilene
Decker Capital Partners
Eddy Hamilton, Cisco
Mike and Lytane Parker
Lettie Hamner, Trent
Mrs. Diltzie Edmondson
Altha Hancock
Ed and Kathy George
Kathie Hancock
Mrs. Marion F. Pack
Delaine H. Hansen, McCaulley
Mrs. Connie Hansen
Lydia Hanson, Brownwood
Mr. Wayne Hanson
Betty Lou Jeschke Hardin, Hamilton
Ray and Debbie Ballew
Steve and Sherri Garrett
Rick and Nancy Gillham
The Moore Family, Mike and Becky & Brent and Ashley
Grace Hardman, Richland Springs
Eddie and Andi Thornburg
A. D. and Lura Hardy, Hamlin
Ms. Judy Tidwell
Betty Hare
George and Carolyn Cook
William Dwayne Hargesheimer, Abilene
Tom and Marian Boecking
Dr. George A. Dawson
Mrs. Louise Hargesheimer
Mr. and Mrs. Dwain Hurst
Mr. Garner Roberts
Bob Harris
Mike and Mary Lou Garrett
Bob Harris, Dallas
Rodney and Barbara Callaway
Pansy Harris
Mr. and Mrs. Milton Christian
Ben S. Harrison, Fort Worth
James and Cathy Wright
Tommye Alice Harrison
Mr. and Mrs. George Harrison
Michael Palmer Hartman, Fredericksburg
Lee and Candyce Pfluger
Jerita Taylor
Glen Hawkins, Abilene
Mrs. Ann Hawkins
Harvey Joe Hawkins, San Angelo
Charles and Ruth Ann McClain
Eleanor Hayden, Fort Worth
Roger and Sharon Weeks
Dereck Hayes
Mark and Trissie Dempsey

Susan Haynes, Abilene
Mr. Robert G. Forman
Mr. and Mrs. Dru Hall
Steve and Kelly Martin
Ms. Sharron Ann Sibley
Sherrell Lynn Hazlewood, San Marcos
Redford and Stephanie Hazlewood
Theda Rhea Bucy Hazlewood, San Marcos
Redford and Stephanie Hazlewood
Glen K. Heard, Tuscola
Bill Schumacher and Kay Frost
Hartley Hearne
Patty and Greg Knight
Maxine Hefner, Flatonia
Shannon, Dana, Shae and Jenna Berry
Cleola Helm
Johnny Helm
Jimmy Hemphill, Coleman
Wes and Lisa Beck
James and Chrissi Hail
James and Arletta O’Shields
Charlie H. Henderson, Snyder
Ms. Jayne Schoonmaker
Gene Henderson
Erick and Patsy Richards
James M. Herald, Abilene
Mrs. Jean Herald
Marvin G. Herber, Tulsa
Mrs. Nan Herber
George Herman
Mrs. Diltzie Edmondson
Mary Evelyn Brister Herman, San Saba
Jordan Cattle Auction
Virginia Hernandez
Mrs. Carole Ann Petty
James and Cathy Wright
Darrel Herode
Kirk and Patsy Cleere and Family
Virginia G. Herrera
Kay Johnson
Arletta Herring
Rodney and Deborah Gordon
E. Dale Herring, Talpa
Rodney and Deborah Gordon
Jean Herring & Family
Frances Herring, Lott
Tex and Barbara Halfmann
JoAnn Herring, San Angelo
Vicki Gray
William (Bill) Herring, Abilene
CBS Insurance
Mrs. Jamie L. Herring
Wilma Herring
Mike and Lytane Parker
Jerry B. Herttenberger, Abilene
First Baptist Church Deacons
Mrs. Louise Hargesheimer

Family of Jerry Bland Herttenberger
Leslie Suzanne McGowen Heskett, Cross Plains
Mr. and Mrs. Ted Murphree
Maybell Hickman, Abilene
Gary and Margie Finley
Tom Hickman
Mrs. Jane C. Appling
Mrs. Janice Hammer
Virginia Hickok
James and Arletta O’Shields
Leroy (Chief) Finice Higgins, Abilene
Kevin and Crista Fender
Anna Hildebrandt, New Waverly
Diana and Lawson Davis
Mrs. Nan Egger
Mike and Mary Lou Garrett
Glen and Missy Gibbs
Brady and Leslie Ann Holcomb
Scott and Amanda Jameson
Boyd and Lynn King
Jerry and Dee Lackey
George and Angie Lane
Kent and Kathy LeFevre
Royce and Peggy Manning
Steve and Kelly Martin
Casey Cooper Hill
Mrs. Michelle Prewit Cranor
The McCright Family
James Preston Hill
First National Bank of Ballinger
Sandy Sibilsky Hill
Mrs. Cheryl Franke
Jeanne Hilliard, Winters
Mrs. Betty Colburn
Lou Hinderliter, Sterling City
Pat and Dawn Foster
Randy Hobbs
Dean and Leigh Lowe
Garry Hodgins, Abilene
Mike and Mary Lou Garrett
Jim and Cindy Parker
Charles Hoelscher, San Angelo
Ms. Cindy Ringer
Hansel Hoffman
Texas Bank
Bob A. Hofmann, Mason
Ricky and Lisa Marks
James Hogg, Las Cruces
Tommy and Donna Broyles
Otto (Bo) Doyle Hohmann, San Angelo
Jordan Cattle Auction
Fran Holland
Dr. and Mrs. Charles A. Endress
Laura Holland, Abilene
Anson General Hospital
Dr. George A. Dawson

MEMORIALS GIVEN *in 2022*

Pat Holland, Baird
James and Chrissi Hail
Bill and Bob Hollweg
Mrs. Merle Hollweg
Aunt Oma (Toni) Holt
Mr. Wayburn Oates
Christelle T. Holt, San Angelo
Liz and Devin Bates
Randy and Becky Buck
Mrs. Virginia Chase
Chip Cole & Associates Ranch Brokers
John and Jess Dapper
Mr. Charles A. Duncan
Ron and Janie Holt Giddiens
Mr. and Mrs. Alfred R. Howard
Ms. Ramona Lane
Lee and Candyce Pfluger
Ms. Elaine Rohr
Harry Holt, Carbon
Mrs. Mary Jo Smith
Alton Hooker
Liz and Devin Bates
Oletha Fay Hooper, San Angelo
Family of Oletha Fay Hooper
Elsie Lee (Sid) Hoover, Ozona
Tommy and JoNel Stokes
Jackie Hopkins
Jimmy and Annie Harris
Mark Heyward Hoppe
Mr. Jerry E. Matthews
Jesse Wayne Hopper
Gene and Neva Bilbrey
Ruby Hord, Sterling City
Mrs. Barbara Gray
Rob and Lindy Robinson
Robert Horton, Bella Vista
Denise Dennis
Stan K. Horwood, Sterling City
Lonnie and Kody Horwood
Julie A. Houston, San Angelo
Mr. Thomas J. Houston
Reid Houy
Douglas and Jenene Taylor
Roma Howard, Abilene
George and Tommye Moss Woodfin
Donna Hrnccirik, Abilene
Mr. Victor Hrnccirik
Roger Huber
Beth Huber
Tim and JoBeth Huber Willis
Charles Hudson
Mike and Mary Lou Garrett
Derald Hudson
Mr. Sidney Saverance
Johnny Hudson, Lawn
Jim and Kay Burleson
Marshall and Deann Eaton
Brandi Gray
Elizabeth Polk

Frances Louise Hughes, Roscoe
Mike and Connie Mallett
Helen Hughes
Mrs. Diltzie Edmondson
Doroathea Logan
Tom Hughes, Graham
Nancy Hughes and Family
Maxwell and Karl Humble
Mrs. Donna J. Ash
Rosella (Sis) Harrison Humphreys, Breckenridge
Bill and Linda Andrews
John Hunter, Abilene
Phillip and Pam Tippen
Shirley M. Hunter, Abilene
The Honorable Bob Hunter
James Everett Hurley, San Angelo
Venitta and Ervin Williams
Carl Hyde, Rocksprings
Marshall and Deann Eaton
-I-
Dotty Ingram, Abilene
Mike and Mary Lou Garrett
Billy Dale Inman
Pat and Dawn Foster
Elizabeth Irby
Mr. and Mrs. Jerry A. Dennis
Jacob Lewis (Jake) Isaac, Abilene
Stamford High School Class of 1954
Don and Carol Walker
Danny Isbell, Abilene
Danny and Pam Butler
Larry G. Ivy, Clyde
Dr. Sandy Hazelip
Mrs. Billie Ivy
-J-
Delmar Jackson, San Angelo
Woman’s Club of Eldorado
Jerry Alan Jackson
Woman’s Club of Eldorado
Lane Jackson, Wingate
Mike and Mary Lou Garrett
Max Jackson
Ms. Ronda Hampton Toeppich
Paula Jacobs
Mr. Scott L. Carey
Simona Jacques
Virginia Barrientez
Johnny Jace James
Rodney and Deborah Gordon
Earl Jarrett
Dennis and Toni Raesener
Ron Jenkins
Mike and Peggy Bien
Becky Jensen, Lueders
Ms. Ramona Hamilton
Tracy and Jewellee Kuenstler
Mr. Darrell Richards
Jerry Jensen, Abilene
Patty and Greg Knight

Wayne Jepson, Abilene
Mrs. Viola K. Jepson
Joe
Mrs. Betty Cole
Debbie Johnson
Milt and Christine Johnson
Jon Patric (Hotshot) Johnson, Gordon
Joe and Mary Harrison
Kathie Johnson, San Angelo
Mr. Bob Dusek
Kenneth Wayne Johnson, Abilene
Annette and Jenette Johnson
Milam Johnson, Austin
Mrs. Susan McWright
Ruth Johnson, Colorado City
Marka and Clay Mitchell
Sharon Ann (Sherry) Johnson, Eldorado
Ray and Debbie Ballew
Callaway and Ronda Hall
Kent’s Automotive
David and Deborah Neal
Hyman and Gina Sauer
Velma Johnson, San Angelo
Mandy and Linda Heinze
Nancy Jane Johnston, Abilene
Matt and Sylvia Brown
Charles and Tracy Edwards
Kevin Edwards
Patricia Edwards
Mike and Mary Lou Garrett
Mr. Don Johnston
Mr. James A. Knighton
Kevin and Annette McCown
Mrs. Susan McWright
Eddie and Jeanette Moore
Asa Thomas Jones, Deming
James and Arletta O’Shields
Curtis Jones, Weatherford
Rebecca L. Wesson
Don and Lillie Ann Jones
Johnny and Betty Farmer
Doug and Carolyn Jones
Ike and Lillie Jones, Coleman
Mr. Lonnie W. Jones
Jazz Kade Jones, Abilene
James and Arletta O’Shields
Jimmy Jones
R. C. Murray
Leon Jones, Haskell
Mrs. Delight Jones
Mimi Jones
Don and Kathy Parrish
William W. Jones
Joe and Mary Harrison
Lewis Jordan, Brady
Mr. and Mrs. Mike Whitworth
R. E. Josey
Mrs. Diltzie Edmondson

MEMORIALS GIVEN *in 2022*

Charles Jurecek, Paint Rock
Stanley and Judy Book
E. H. and Cecilia Brosig
Dean and Vickie Williams
-K-
Gail C. Kaiser, Los Angeles
Bill and Maedene Armer
Genevive Wollam Kamer, Clinton
Ms. Bertie J. Kinard
Diane Karl
Warren and Gayle Woodward
Kathy and Debbie
Mrs. Peggy Elmore
Grace Keith, Plainview
Phillip and Bobette Hettich
David C. Kelley
Mrs. Wanda Joy Kelly
Verlin Kelly
Joe and Su Henderson
Stephen Lee Kelton, San Angelo
Jordan Cattle Auction
Lee and Candyce Pfluger
Doris Kempton
James and Cathy Wright
John Stephen Kenley, Ozona
Tommy and JoNel Stokes
John H. Kennedy, Abilene
Mrs. Addie S. Kennedy
Leman and Marian Kennedy, Gouldbusk
Kevin and Lisa Kennedy
T. R. Kennedy, Milford
Kevin and Lisa Kennedy
Ed and Janeene Kerley, Abilene
Mrs. Doris Spikes
Donnie Kiker, Anson
Mrs. Diltzie Edmondson
Mrs. Teresa Kiker
William George Kiker, Sr., Abilene
Gilbert and Dottie Korman
Connie Kilburn
Mike and Lytane Parker
Dorothy Kilpatrick, Abilene
Rodney and Debi Kay Goodwin
Larry Kimball, Abilene
Mrs. Barbara Druesedow
Karon Kincannon
Mr. Richard Kincannon
Eileen King Balli
Elaine Bunch
Agatha M. King, Westbrook
Hal Morren
Mrs. Mary Beth Morren
Dale and Leta King, Cisco
Bonda Jones
John King
Mrs. Kay Green
Laurence King, Slaton
Jerry and Suzanne Perry

Vuna King, Abilene
Mrs. Margie Wheeler
Wilma (Ruth) King, Abilene
Tommy and Vicki Blair
The Ruth King Family, Lycia Hardin and Casie
Letty Kinkead, Junction
Jerry and Dee Lackey
Arvil Kinsey
Charles and Nancy Palmer
Mrs. Susan Perales
Tommy and Kathie Rogers
Viola Kleman
Ben G. and Molly Scott
Helen Klett, Abilene
Stanley Horace Klett
Gladys June Knight, Abilene
Harold and Ann Elledge
Ms. Helen Johnson
Marla and Rick Rhodes
Mrs. Louise Whitaker
Renee Knowles, Abilene
Gary and Tammy Bowen
Brandi Koering, Clinton
Ms. Bertie J. Kinard
Ferrell Sneed Koon
Mike and Connie Mallett
Carol Koschak
Mr. Karl Koschak
Hunter Kowalik
Kenneth and Jane Venable
Keith Kubitz
Mrs. Marcia Kubitz
Billie L. Kupatt, Sagerton
Mrs. Jane C. Appling
Mr. Darrell Richards
Spitzer Animal Health, LLC
Maude A. Kuykendall, Cherokee
Jordan Cattle Auction
Stan Kvapil
Mrs. Pat Kvapil
-L-
Janie K. Lackey, Granbury
Danny and Martha Alice Spraberry
Shari D. Lackey, Granbury
Danny and Martha Alice Spraberry
Travis Lackey
Mr. Larry Ringer
Lyle Lacy
Lloyd and Barbara Jones
Jerry Lake, Bryson
Mrs. Fran Massengale
Herbert Lakey, Sylvester
Mrs. Diltzie Edmondson
Elouise Lambert
Mrs. Mary Hardin
Carol Lamnek
Grant and Sherry Lee
Helen Landers, Menard
Mr. Jake Landers

Les Lane
Mrs. Joanna Parrott
Hubert Walter Lange
Ron and Patsy Milford
John Stephen (Johnny) Langford, Graham
Mr. Robert A. Langford
Lisa D. Langford, Graham
Mr. Robert A. Langford
Randy Langston, Abilene
Mr. and Mrs. Woody Gilliland
Mrs. Kirsten Herndon
Steve and Kelly Martin
Barby Nobles
Karla D. Stephens
Fran Stone
Winners Circle Patio Homeowners Association Inc.
Doris Jane Laswell, San Angelo
Linda B. Laswell
Connie Evelyn Latham, Borger
Tanner and Carol Mahan
Michael Latham, San Angelo
Stacy and Chad Greaves
Alice Lavonnc
Mr. and Mrs. Edward Stratton
Giles Milton Lee
Ben G. and Molly Scott
Jeremy Shea Leech, Abilene
Don and Debbie Smith
Janis Leeper
Mike, Jill, Ben, and Jeremy Schwertner
Joyce LeFevre, Sagerton
Patty and Greg Knight
Mr. Darrell Richards
Clark Lemond
Mike and Mary Lou Garrett
Roger B. Letz, Old Glory
Daniel and Lynne Talbot
Billy W. Libby, Abilene
Mr. Don J. Smith
Betty Jo Ligon
Ms. Deborah S. Ligon
Gene Lilly
Mr. and Mrs. Bill Black
Tommy and JoNel Stokes
Jim A. Lincycomb, Jr., Winters
Mike and Mary Lou Garrett
Jeff Lindley
Mr. Charles Crawford, Jr.
Winnie Ruth Liner, Sweetwater
Jean Herring & Family
David Linn, Nolan
Mr. Steven W. Webb
Horace Whitfield Linthicum, Eldorado
Mr. and Mrs. Justin Paxton
Ronnie and Prissy Paxton
Ella L. Little, Abilene
Andy and Debra Brown

MEMORIALS GIVEN *in 2022*

Wanna Lou Lloyd
Mr. Scott W. Alexander
John Mack Lockhart, Breckenridge
Mr. Robert A. Langford
Jerry Logan, De Leon
Mr. Charles Crawford, Jr.
Darrell Long
Mr. and Mrs. Billy D. Bozarth
Jimmy Long
Joe and Donna Riley
Maxine Long
Mr. and Mrs. Olin M. Boyd
Charlie and Marsha Halfmann
Ralph and Bernita Wentz
Sidney J. Long, Robert Lee
Mr. Johnny G. Copeland
Terry D. Long, Miles
Katy Green
Patricia Speck Loveless
Cody Speck
Jack and Tillie Lowery
Pittsburgh Lowery’s
Matilde Velazquez (Tillie) Lowery
Luanne Chynoweth
Ed and Cindy Duryea
Shiela Herrmann
Mondonna Namy-Pierce
Mary Sullivan
Rex Lust
Ben G. and Molly Scott
Dionitia Rambo Lyckman, Menard
Jerry and Dreu Bearden
Otis H. Lyckman, Menard
Jerry and Dreu Bearden
Joan Gray Lyles, San Angelo
Bob and Dorothy Miller
-M-
Billy MacAdams
Mike, Jill, Ben, and Jeremy Schwertner
Jimmie Machann, San Angelo
James Brown
Mrs. Judy Sheffield
Randal W. Madry
Betty Caperton
Rex Mahan, Jr., Coleman
Jordan Cattle Auction
J. R. Manning
Dale, LeeAnn, and Katie Greene
Patsy and Tommy LaFon
Luis A. Mares, Jr., San Angelo
Jimmy and Barby Nobles
Von Marr, Abilene
Mr. Rodney W. Robertson
Shirley Lee Marsh, Abilene
Mr. and Mrs. Woody Gilliland
Dale Martin, Sweetwater
Jean Herring & Family
Phil and Patsy Wright
George Martin, Loraine
Mr. and Mrs. Joe Taylor

Nelva June Bolt Martin, Eldorado
Mrs. Jenny Sue Trainer
Ed Martindale, Bronte
Jerita Taylor
Joe R. Martinez, Jr.
Lidia Martinez
Lupe Martinez
Lisa Martinez-Soto
Bobby Mask
Grant and Patsy Hall
William Saunders (Bill) Mason, Jr., Ozona
Mrs. Marolyn Bean
Mr. and Mrs. Bill Black
Tommy and JoNel Stokes
Alan Matejowsky, Burnet
Mrs. Betty Matejowsky
Mary (Mickey) Mathis, Ovalo
Mr. and Mrs. Kerry Hibbitts
Billie Yvonne Matthews, San Angelo
Antina Management
Phillip and Barbara Benge
Forrest and Jacqueline Brewster
Bridgford Foods of Texas
DDC Ranch Consulting, LLC
Georgia L. Hayse
Mrs. Dorothy M. Knapp
Mr. and Mrs. David F. Sellen
John A. (Warden) Matthews, Albany
Johnny and Jana Trotter
Judy Matthews, San Angelo
Liz and Devin Bates
Karry and Susan Owens
Lee and Candyce Pfluger
Julia Jones (Judy) Matthews, Abilene
Lawrence and Mary Gill
Johnny and Jana Trotter
Lorita Matthews, Clyde
Shirley Buchanan
Bill and Jean Burgess
Family of Lorita Matthews
Louise Matthews, Big Lake
Mrs. Jan Owens
Arnold Matthiesen, Ballinger
Clifton and Maxine Michalewicz
Dale Maxwell
Ben G. and Molly Scott
Cecil Mayes, Stephenville
Mike and Lytane Parker
Winnette Maynard
Dr. Charles Delaney
Buddy Mays, Coleman
Keith and Christine Bessent
Mary A. McCloud, Eastland
Mr. and Mrs. Henry Musselman

Charles Arthur (Mac) McClure, III, Parker
Bill and Lila Senter - The Explorers
Dorothy McClure, Bronte
James and Arletta O’Shields
Wayne McClure
James and Arletta O’Shields
Steve McCollum, San Angelo
Randy and Karen Collins
Sheila McConnell Workman
Mrs. Jan Boles
Pat McCord
Ms. Charlene Lewis
Frances McCowen
Joe and Cynthia Jackson
Doug and Susie White
Chester Lee McCown, Miles
Stanley and Judy Book
Kenneth (Chuck) McCurry, Jayton
Dave and Beverly Caddell
Gayle McDonald, Snyder
Mr. and Mrs. Britt Medford
Jerry McDonald, Abilene
David and Glenda Buhrmann
Kirk and Shronda Shannon
Mr. Cal L. Sumrall
Mrs. Janet Taylor
Melodie Starr McDonald, San Angelo
Joe and Su Henderson
Ruby McDonald, San Angelo
Mrs. Genny Henderson
Steven and Jennifer Hoelscher
Jerry and Dee Lackey
R. W. McDonnell, Abilene
WTRC Foundation
Ewing (Mackey) McEntire, Jr., Sterling City
Mrs. Cathy McEntire
Carolyn McKee, Marble Falls
J. W. Kincaid and Billye Purnell Kincaid
Walter Gary McKee, San Angelo
Steve and Kelly Martin
Dale McKinney, Stephenville
Mr. and Mrs. Robert D. Dunning
Mrs. Marla McKinney
Hollis McLane, Breckenridge
Mr. Darrell Richards
Shirley McMillan
Eddie and Andi Thornburg
Ted McMillan
Mrs. Mary Hardin
Eddie and Andi Thornburg
Bernadine McNellis, San Angelo
Brent and Eleanor Arnett
Regina McVey, Maryneal
Jean Herring & Family

MEMORIALS GIVEN *in 2022*

Barbara Copeland Meador, Matador
Mr. and Mrs. Bill Black
John David Meador, Eldorado
Ray and Debbie Ballew
Ray Meadows, Breckenridge
Mr. Robert A. Langford
Callan Tate Meers
Mike and Myra Moreau
Bill Meinecke, Houston
Will M. and Vickie Black & Murphey and Allie
Travis Meitzen, Jr., San Angelo
Jerry and Dee Lackey
Jack Meixner
Dean and Leigh Lowe
Andrew (Andy) Mendez, Baird
Mrs. Alejandra Mendez
Frank D. Menix, Big Spring
Dennis and Vickie Leatherwood
Jack E. Mergele, II, Abilene
Crescent Supply Company
Patty and Greg Knight
Elizabeth Polk
Bill and Lila Senter - The Explorers
Hymonda Merkel, Abilene
Mrs. Mary Bauernfeind
Bob and Marilyn Cluck
Nina Lorene Merket, Abilene
Suzanne K. Corso
Mr. David Denison
James and Diane McShan
Ms. Nell Toombs
Elizabeth B. Meroney, Anson
Wayne and Sandie Propst
Luan Meyer, Abilene
Howard and Jewel Rogers
Bert L. Middleton
Rodney and Deborah Gordon
Mary Lou Midkiff, Midland
Tanner and Carol Mahan
Bynum W. Miers, Abilene
Mr. Mark S. Miers
Russell A. Millar, Waco
Jerry and Kay Tinkler
Dia N. Miller, Abilene
Bill Schumacher and Kay Frost
Paul Ellis Miller, Abilene
Mr. and Mrs. Keith D. Brock
Riley Miller, Justiceburg
Tommy and Cindy Wright
Fletcher (Buzz) Mills
Mr. and Mrs. Lane Porter
Randall (Randy) Minton
Mr. and Mrs. Michael Bodine
Mary Margaret Mitchel, Brady
Jerry and Frances Laird
Michael Mitchell
Marka and Clay Mitchell
Shirley Mitchell, Sanderson

Marka and Clay Mitchell
Carol Mock
Harry and Ruth Harding
Maurice J. Moeller, San Angelo
Rey and Juanita Casarez
Mom and Dad
Mr. James Colvin
Carolyn Monk
Mr. Robert C. Monk
Felipe O. Montalvo, Christoval
Ms. Patty Montalvo
Monte Montgomery
Wilbert and Betsy Lehnert
Adolfo Montoya
Ms. Megan Cheek
Bobby E. Moore, Moran
Jerald and Renate McLemore
C.W. Moore, Abilene
Kent and Kathy LeFevre
Hugh Moore
Garry and Delores Borg
James Douglas (Jim) Moore, Abilene
Bill Schumacher and Kay Frost
Kyle Moore, Mc Caulley
Mrs. Diltzie Edmondson
Rex Moore, Abilene
Mrs. Tiffany Wagstaff
Rocky Moore, Lueders
Mr. Darrell Richards
Anisimo Julian Moreno
Stamford Insurance Agency, Inc.
Brenton J. Morenz
Ron and Janie Holt Giddiens
Lee and Candyce Pfluger
Debbie Morgan
Ben G. and Molly Scott
Horace Clyde (Lefty) Morrow, Hawley
Mrs. Jo Weeks
Sue Morton, Stamford
Dickie and Marilyn Shaw
Cliff Morvant
Lloyd and Barbara Jones
Dale Mountain
Mike and Mary Lou Garrett
Conny Mueller
Mrs. Linda Phillips
James Mullins
Mrs. Jane Hassen
Mrs. Ann Kinney
Dan (Bud) Munroe, Valley Mills
Mrs. Diltzie Edmondson
James (Jim) Munsell, Carlton
Mrs. Marla McKinney
James (Jim) Harrell Murphy, San Angelo
First Financial Bank of San Angelo
William W. Murray III
Buddy and Torey Fisher

Butch Murray
Jean Herring & Family
O. J. Murray, Winters
Donald and Marie Kruse
-N-
Charles B. Nabors
Mr. Charles Crawford, Jr.
Becky Nauert
Barbara, Tisha, and Todd Harrison
Randy and Betty Murphree
Mrs. Carole Ann Petty
Rebecca (Becky) Nauert, Stamford
Denise Dennis
Mr. Darrell Richards
Spitzer Animal Health, LLC
Mary Neill, Brownwood
Ricky and Lisa Marks
Homer Nelson
Mr. David Groves
James Nesrsta
Mr. and Mrs. Ed Compton
Rick Nester
Tommy and Maje Arthur
Roy (Curley) H. Neves, Snyder
Anonymous
Sue Newcombe
Kirk and Shronda Shannon
Doyle Newton
The Shirley Newton Family
Millie Northrup
The Talley Family
Betty V. Novak, Abilene
Mr. Frederick Novak
James Edward Nowell, Abilene
Mrs. Twila Nowell
James (Jim) Nowlin
Monte and Patti Morrow
Sandra Louise Nowlin
Mrs. JoAnn Motl
Jo Ann Nutt, Abilene
Mr. Rex L. Nutt
-O-
Fred B. Oakes, Abilene
Kathy and Allen Yancey
Eddie J. Odom, McCamey
Mrs. Gloria Odom
Bobby O’Donald, Abilene
Randy and Barbara Carson
Jim O’Hara
Betty Crosten
Ron and Susie Heflin
Tommy and Carol Hiebert
Virginia Lea
Texas Bank
Clifford and Bertha Ohr
Ann and Leslie Ohr
Patsy O’Kelly, Trent
Mrs. Diltzie Edmondson
Donald Fredrick Osada, Flint
Lloyd and Barbara Jones

MEMORIALS GIVEN *in 2022*

Clara Dean O’Shields, Abilene
Shirley Landers - Kevin - Heida
Mr. Kenneth O’Shields
Herman O’Shields
James and Arletta O’Shields
Our Parents
Mr. and Mrs. Thomas A. Wadsworth
Bode (Buck) George Owens, Jr., Barnhart
Jerry and Dreu Bearden
Mr. and Mrs. Bill Black
Boyd and Courtney Brooks
Louis and Charlotte Lee Brooks
Fred and Jane Chandler
Mr. Johnny G. Copeland
Mr. Steve Elkins
Mark and Mary Henderson
Jordan Cattle Auction
Jerry and Dee Lackey
Mr. and Mrs. Len P. Mertz
Mrs. Jan Owens
Tommy and JoNel Stokes
Mr. and Mrs. Ben Stribling
Edward and Kristen Studer
Dean and Vickie Williams
Earl Owens
Charles and Nancy Palmer
James Arnold (J. A.) Owens, Jr., Clyde
James and Arletta O’Shields
Sheryle Owens
James and Arletta O’Shields
Vera Owens
James and Arletta O’Shields
-P-
Zeke Palma
Mrs. Cora Mulanax
Vance W. Palmer, San Angelo
Michael and Tina Book
Mrs. Priscilla Griffis
Bill and Candy Mikeska
Mrs. Sammie Palmer
Terry and Ingrid Palmer
Mrs. Karla Stewart
Hugh and Bitsy Stone
Eddie L. Papasan, Granbury
Mr. Bobie L. Papasan
Donna Pardee, Albany
Mike and Lytane Parker
Parents
Mr. Bob Hill
Billy Doak (Slats) Park, Roby
Vick A. Burk
David Parker, Menard
Tanner and Carol Mahan
Joe Allen Parten
Doug and Rhonda Schmidt
Mr. Mark Synek
Alexa Rhea Partridge Lamon
Joe and Judy Fincher

Sue Patton, Abilene
Mr. Dewayne E. Chitwood
Marshall and Deann Eaton
Candy Paulk
Ms. Christy Paulk
Dick Payne
Lloyd and Barbara Jones
Lynn Payne
Lloyd and Barbara Jones
Sue Hollen Peacock, Albany
Lisa Swanson Echols
Mr. Robert A. Langford
Dean and Leigh Lowe
Mr. Robert C. Waller
Troy Peacock, Hawley
Paige and Sue Baize
Mr. Robert C. Waller
Dick Pelton
Patty and Greg Knight
Duke R. Pendergraft, Abilene
Mrs. Yvonne Reves
Joe Perales, Rotan
Mr. and Mrs. Larry Browning
Andrew J. Perez
Ms. Diana DeHoyos
Helen Perrin, Dallas
The Helen M. Perrin Living Trust
Betty Jean Henderson Tupper Perry, San Angelo
Mike and Peggy Bien
Jackie and Pat Eason
Ms. Debra K. Johnson
Donald R. Perry, Dallas
Mrs. Nanette Perry
Matt Person, Brownwood
Felix and Nancy Boyd
Lynn Peterson
Reid, Chaucy, and Savannah Cave
Charlie Clarence Pfeiffer, Jr.
Faron, Brent, and Kevin Pfeiffer
Gladys Pfluger, Pflugerville
Mrs. June Helwig
Fred Steve Phillips,
Fredericksburg
Lloyd and Cindy Harper
Patricia Dorothy Phillips
Mrs. Sharalee Pierce
Betty C. Pierce, Abilene
Anne Pierce
Duane Marshall Pierce, Abilene
Anne Pierce
Milton R. Pierce, San Angelo
Pat and Linda Gladden
Mrs. Sharalee Pierce
Rosemary Pierce
Paul and Tammy Sorrells
Steve Pierce
Kimley-Horn
Vera Pierson
Fred and Christy Kreger

Bette June Pitcock, Jourdanton
Mr. Randall Pitcock
Mary Ann (Polly) Pitzer, Breckenridge
Mike and Lytane Parker
G. W. and Kay Poer, Abilene
Ms. Frances K. Poer
Carla Beth Polk, Pontotoc
Jordan Cattle Auction
Bill Poore, Plano
Fred and Christy Kreger
Nina Pormann
Mr. John Pormann
Bob Porter
Jim and Louise Jones
Michael Wynn Poss, San Angelo
Patrick and Amy Bailey
Mr. Martin D. Heard
Stephen and Jamie Howard
Deborah Julian
Debbie McGehee
Mr. Albert C. Ricci, II
Randy and Heather Rodgers
Diana Scarbrough and Debra Harris
Jennifer Poss Taylor
Lori Rascoe Potter, San Angelo
Mr. Dale Potter
Milton (Pat) Potter, San Angelo
Mr. Dale Potter
Mary Dunagin Poulsen
Rodney and Debi Kay Goodwin
Charles E. Powell, San Angelo
Teresa McKinney
James M. Powell, Stamford
Tracy and Jewellee Kuenstler
Randa Graves Powell
Stanley and Judy Book
The Moore Family, Mike and Becky & Brent and Ashley
Agnes Powers
Bubba and Penny Klostermann
Patty and Greg Knight
Royce and Peggy Manning
Jimmy Powers, Sonora
Mrs. Diltzie Edmondson
Callaway and Ronda Hall
D. D. (PeeWee) Poynor, Big Lake
Whitney Brandon
Darlyne Rose Miller Poynor, Big Lake
Whitney Brandon
Gary Poynor
Mike and Mary Lou Garrett
John (Buddy) Dolan Poynor, Big Lake
Whitney Brandon
Ronald Presley, Winters
Donald and Marie Kruse
Howard and Jacalyn Pruser
Jay and Stephanie West

MEMORIALS GIVEN *in 2022*

Mignon (Yonnie) Preston, Lubbock
First Baptist Church Overcomers Life Group
Ken Prewit, Hamlin
Mr. and Mrs. Charles W. Shira, Sr.
Mitzi Price, San Angelo
Bentwood Ladies Golf Association
Ralph Price, Fluvanna
Kim and Gary Clay
Jacqueline Wills
Ty and Mindy Wills
Rodney Ray Price, Abilene
Marshall and Deann Eaton
Bubba and Penny Klostermann
Terry Pringle
Charles and Anne Marie Pringle
Kathy Probandt, San Angelo
Liz and Devin Bates
First National Bank of Ballinger
Bill and Missie Pittman
Stribling-Probandt Appraisals
The City National Bank
Pamela Pryor, Coleman
Tim and Suzanne Golson
-R-
Jerry Rambo, Menard
Tanner and Carol Mahan
Arnold Ramming
Lloyd and Barbara Jones
Johnnie Mae Raney
Marshall and Deann Eaton
Billy Jack Rankin
Ron and Janie Holt Giddiens
Mabry Glenn Ratliff, Llano
Jordan Cattle Auction
Phil Earnest Raughton, Abilene
Patty and Greg Knight
James Albert (Jim) Rawlings, Bronte
Ms. Patty L. Rawlings
Edna Engler Ray, Stephenville
Joe and Mary Harrison
Olivia Reames, Albany
Harold and Mary Cornelison
Kathy Reavis
Mr. and Mrs. Bill Black
DeeDee Reed, Abilene
Patty and Greg Knight
John S. Reed, Walters
Mrs. Charlotte Reed
Hannah Elizabeth Reeder
Phillip and Kathy Gage
James Charles Reese, Eldorado
Mrs. Mary E. Roden
Sam Reeves, Abilene
Mrs. Jane C. Appling
Robert and Jean Campbell
Coker Farms
The Estes Family
David and Donna Gist

Patty and Greg Knight
Ken and Pam McComas
Mr. and Mrs. Donald Saverance
Albert J. Rehm III, Snyder
Doug and Susie White
Pete Renick
Abilene Geological Society
Mrs. Tiffany Wagstaff
Chantal Respondek
Johnny Harkins Family
Ray Reves, Avoca
Barbara, Tisha, and Todd Harrison
Tracy and Jewellee Kuenstler
Mrs. Carole Ann Petty
Gloria Reyes
Ben G. and Molly Scott
Vance Lee Reynolds, Snyder
Wayne and Cheryl Winkles
R. L. Rhoten
Grant and Sherry Lee
Katherine L. Rice
Camille Kerr
Clara Richards, Avoca
Mr. and Mrs. Fritz Richards
Gary and Sharon Stanford
Don Richburg, Sweetwater
Mr. and Mrs. Nathan Richburg
Millard Richmon, De Leon
David, Melinda and Ted Pitzer
James L. Ricker, Abilene
Craig and Lori Griffis
Mike and Phyllis Ricker
Sandra Riddle, Hamlin
Melba and Terry and Deana Bailey
Kent Leon Rideout, Abilene
Joe and Margaret Kendrick
Jerry D. Riggs, Abilene
Phil and Patsy Wright
Jesse Rios, Hermleigh
Mr. David Groves
James Ritter
Buddy and Torey Fisher
Albert Rivas
Jim and Brenda Robertson
Betty Roberts Hargus
Jean Herring & Family
Bill Roberts
Mrs. Michelle Prewit Cranor
SuAnn Roberts
Ace Air Conditioning Company
Paula Schraub
David Robinett
Jerrie Sherrod
Helen (Poodle) Robinson, Snyder
Daren Benbenek
Borden and Dorothy Gray
Cliff and Kathy (Scrivner) Hall
Jay Hall
Mark and Amy Hargrove
Jessie J. Hays

Mr. and Mrs. Shawn Hays & Family
Mrs. Nona Key
Wesley and Janis Key
Ms. Cindy Lacik
Ben, Michael, and Brent Murphy
Mr. John D. Richardson
Mrs. Doris Spikes
Ralph and Virginia Trevey
Ms. Peggy Vernon
Carl and Nona Williams
Doris Wilson
Tommy and Cindy Wright
Cindy L. Rodgers
Chuck Rodgers
Ruben Rodriguez, Big Spring
James and Arletta O’Shields
Jack Rodriquez
Ms. Vivian Rodriguez
Amber Rogers
Jimmy and Barby Nobles
Grace Rogers
Dr. Gus Alexander
Liz and Devin Bates
Kenneth D. Rogers, Abilene
Charles and Nancy Palmer
Mrs. Jackie Pruet
Mr. and Mrs. Aaron Waldrop
Lacy Roop, Breckenridge
Melissa Ghelani
Kimberly Lindsay
Rollins and Patsy Roth
Diane and Brandon Smith
Ann Patterson Rose
Mrs. Era J. (Andy) Richey
Jayline Rose
Johnny Harkins Family
Sue Linthicum Rosford, Norton
Mr. and Mrs. Justin Paxton
Hugh W. Ross
Ms. Mary R. Sweet
Carole Rosser, Stephenville
Cheryl Longley
Jack Edwin Rueffer, Brazoria
Mr. Henry Hohenberger
David (Dave) Rush, Coleman
Mrs. Liz Rush
Belva Rutherford, Brownwood
James and Ann Hargett
Gary and Mary Strickland
Bob Rutherford, Aspermont
The Abernathy’s
-S-
Kenneth Saffel, Rule
Dickie and Janna Brendle
Dennis Cloud
Steve and Lesa Hertel
Pamela Salmon, San Antonio
Mr. Richard W. Salmon
Richard Sanchez, Zephyr
Larry Holamon

MEMORIALS GIVEN *in 2022*

Jenny Smith
Bob Sanderson
Mrs. Sharalee Pierce
Sandy
Mr. and Mrs. Danny Sturgill
Howard Wayne Sawyer, Sonora
Mrs. Kay Green
Frances Sayles
Mrs. Diltzie Edmondson
Elizabeth Scarberry
Wayne and Cheryl Winkles
Charles Scarborough, Abilene
Sheldon and Mattia Bray
Frank Scarborough, Abilene
Nelson and Sonya Quinn
Whitten Schaffner
Mike and Tanya Barker
Penelope S. (Penny) Schasre, Bolivar
Steve and Lesa Hertel
Geraldine Schlabs
Ben G. and Molly Scott
Bettye Schmeltekopf
Mrs. Betty J. Drennan
Lawrence (Smick) Schmucker
Ben G. and Molly Scott
Ann Way Schneemann, Big Lake
First Financial Bank of San Angelo
The Gideon Family
Jerry and Dee Lackey
Mr. Mark Meroney
Mr. Bill Schneemann
Barry and Hallie Zietz
Brent Scholfield
Garry and Delores Borg
Alan and Sharie Jones
Mrs. Bootsy Norwood
Mickey Schoonmaker, Avoca
Barbara, Tisha, and Todd Harrison
Jason Schultz
Mike and Mary Lou Garrett
Steven Thomas Schultz, Devine
Mr. Robert A. Langford
Mark Schwertner
Jimmy and Joyce Fine
Ada Mae Scott
Peggy and Adrienne Dickerson
E. Dorris Scott, Abilene
The Jordan Family
Terri Scott
Michael Scroggs
First National Bank of Ballinger
Clarence Searcy, Brady
Jackie Gleitz
Mr. Bert Mayse
Tom and Pam Payton
Anna Jo Sears, Lake Kiowa
Mike and Mary Lou Garrett
Alvin Seibt
Jay and Sara Harris

Helen Seibt
Jay and Sara Harris
Daniel Seidel, San Angelo
Mrs. Sandra K. Seidel
Linda S. Sellers Jones
Mr. Robert A. Langford
Cecil Lee (Pinky) Sellers, Jr., Lubbock
Joe and Sissy Beck
Jordan Cattle Auction
Charles (Charlie) Sellers, Sr., Amarillo
Ben G. and Molly Scott
Ray Sellers, Brownwood
Mrs. Virginia Sellers
Beverly J. Seward, San Angelo
Jim and Karen Schneider
Randy and Michelle Schneider
Richard Shahan
Mr. and Mrs. W. R. Shahan
A. C. Sharp, Jr., Southlake
Lynn and Pat Mendenhall
Mr. and Mrs. Paul N. Williams, Jr.
Sandra B. Shea, San Angelo
Steve and Kelly Martin
Doyle Rushing Sheffield, San Angelo
Mrs. Gloria Sheffield
Mary Joyce Shelton, Abilene
Kenneth and Barbara Lange
Rudy and Cindy Raughton
Dan and Lorraine Seay
Mrs. Shirley Seay
Wayne and Mattie Smith
Johnny Sherley, Lawn
Kent and Kathy LeFevre
JoAnn Sherman
Danny and Kathy Williams
Debra Shields, Brownwood
Mr. Larry Shields
Donna Lee Shipp, Abilene
Rodney and Debi Kay Goodwin
W. T. (Buster) and Ernestine Shirey, Abilene
Dr. and Mrs. Paul B. Thames
Shirley
Garry and Delores Borg
Patricia Shores
Johnny Harkins Family
Paul Shytles, Abilene
Ms. Sharron Ann Sibley
Susan R. Sifuentes, Eden
The Basquez Family
Neal and Sue Hendricks
Bobby Siltman, Abilene
Mr. Alvis Ashley
Mrs. Sue Siltman
Gail W. Simmons, Dallas
Mrs. Ann Kinney

Jessie Simmons
Mr. and Mrs. Jerry A. Dennis
Wanda Sims, Baird
Jim and Laurie Brannigan
Wes Sims, Sweetwater
Tim and Connie Collier
Susan Griffin Sitler
Mrs. Colleen C. Lamb
Pam Sivells
Mr. Steven B. Henderson
Kenneth Sledge
Kaye Johanson
Audrey and Bonnie Neel
Micharel D. Slentz
Mr. Robert A. Langford
Virgil Slentz, Humble
Mr. Robert A. Langford
Virginia M. Slentz
Mr. Robert A. Langford
Bernice A. Sloan, San Saba
Jordan Cattle Auction
David M. Smith, Abilene
Rodney and Debi Kay Goodwin
Diane Mitchell Smith, Buchanan Dam
Mr. Robert A. Langford
Doug Smith
Don and Doty Benningfield
Floyd Randall (Randy) Smith, Graham
Mr. Steve Limke
Ian Matthew Smith, Three Rivers
Aaron and Mandi Ellis
J. D. Smith, Tell
Frog and Jane Smith
Jim Smith
Jerita Taylor
JoAnn Smith
Charles and Nancy Palmer
Patricia Ann Edmondson Smith, Mullin
Jerry and Brenda Damron
Mrs. Diltzie Edmondson
Good News Mens Bible Study of Brownwood
The Holamon & Gist
Larry Holamon
Jordan Cattle Auction
Jenny Smith
Dr. and Mrs. Raymond Stepp
Randall Gene Smith
Buddy and Torey Fisher
Rick Smith
Jerry and Dee Lackey
Shelley V. Smith, Abilene
Duane and Becky Fox
Seth and Katelin Smith
Shirley Sue Smith, Abilene
Seth and Katelin Smith
Tara Smith, Grand Prairie

MEMORIALS GIVEN *in 2022*

Mike and Mary Lou Garrett
William (Bill) Smith, Lovington
Ms. Gayle Amundson
George Snapp, Midland
Mrs. Joyce Snapp
K. V. Sneed, Abilene
David and Glenda Buhrmann
Clois Snell, Big Spring
Ms. Patricia Fisher
Billy Max Snider, Snyder
Joe and Margaret Kendrick
Mary Imogene Snodgrass, Brady
Steve and Edith Snodgrass
Billy Ray (Bill) Snowden, Abilene
Mrs. Mary Pendley
Ruth Snyder, San Angelo
Mrs. Cheryl Franke
Marilyn Soisson
Mike and Mary Lou Garrett
Bubba and Penny Klostermann
Marsha Rutland
Carl Southward
Ms. Linda F. Sissel
Allen Benton (Ben) Sparks, Colorado City
Advanced Concrete Surfaces, LLC
Mrs. Brenda Aguillon
Crider Real Estate & Livestock
Employers Mutual Casualty Company
Larry and Susan Farr
First Bank and Trust
Toni Garcia
Scotty and Sally Goldsmith
Rodney and Deborah Gordon
Mr. and Mrs. Lance Hall
Randy Henderson
Brad and Erin Hicks
Ms. Lisa K. Kirk
Mrs. Joan Lemons
Kirk and Maureen Morris
Mr. and Mrs. Henry Musselman
James and Donella Parker
Julie Perry
April Propst
Ms. Ann Reed
The Rees Family
Barbara B. Robinson
Frank and Sue Scharffenberger
Paige Shaw
Teresa Simmons
Mrs. Margaret Sparks
Mr. and Mrs. Zollie C. Steakley
Gary and Kim Womack
Mrs. Berniece Wood
Delvin Sparks
Winton and Virginia Milliff
Eva Geraldine (Beppo) Speck, Eden
Mrs. Kay Green
Mrs. Era J. (Andy) Richey

John Spence, Rio Rancho
Ms. Sharron Ann Sibley
Wanda Spence, Dallas
Ms. Sharron Ann Sibley
Ford Spikes, Snyder
Kelly Bartley
Reid, Chaucy, and Savannah Cave
Garry and Julie Hull
Ben, Michael and Brent Murphy
Mrs. Anita Talbott
Steve and Angela Teichelman
Eddie and Andi Thornburg
Doug and Susie White
Tommy and Cindy Wright
Tom Spikes
Les and Sheryl Strickland
Bonnie Spraberry, Anson
Rodney and Debi Kay Goodwin
Katherine (Kappy) Stanfield, Abilene
Mr. Charles A. Stanfield, Sr.
Jerry (Squasher) Stanford, San Angelo
Mrs. Alma Stanford
Wanda Stark
Roy and Sandra Alexander
Melissa Jill Steen
Eddie and Andi Thornburg
Mike Stenson
Lonnie and Patricia Decker
Bobby Carl Stephens, Caddo
Mr. Robert A. Langford
Farrell (Bo) Stephens, Cisco
Ms. Megan Cheek
Mrs. Carol Stephens
Joe Stephenson, Ballinger
Dianne Merfeld
James Carol Stepp, Eden
Mrs. Elizabeth Cypert
Ms. Joyce Y. Jackson
Mickey Sterling
Steve and Renee’ Moore
Janice Stevens
Patty and Greg Knight
Joe Mack Stevens
Warren and Gayle Woodward
Ann Stevenson, Arlington
Tanner and Carol Mahan
Alma Stewart, Hamlin
Allie Crowe
Charles Stewart, San Angelo
Sterling and Alicia Cole
Mrs. Diltzie Edmondson
Rene Stewart
Danny and Le Ruth Stewart
Jane Massey Stockton, Rockwall
Bill and Linda Andrews
Gail Stoeker
Rodney and Debi Kay Goodwin

John D. Stowe, San Antonio
Bill and Linda Andrews
Royce Stowe, San Angelo
Ray and LaQuita Bishop
Mrs. Brenda Boydston
Mike and Cynthia Halamicek
Carolyn Kathleen Strain, Abilene
Bill and Maedene Armer
Bill Schumacher and Kay Frost
Georgia A. Strand, Stamford
Mrs. Michelle Prewit Cranor
Mrs. Janice Hammer
Mr. Darrell Richards
Charlotte E. Strawn, Burkett
Mr. and Mrs. Ray Etheredge
James and Chrissi Hail
Stancy Stribling
Douglas and Tina Bean
Dan Strickland
Chase and Kay Holland
Donalda Sue Strickland, San Angelo
Mr. Gerald Strickland
Shirley Strickland, Hawley
Lonnie and Patricia Decker
Mrs. Judy Detamore
Linda and Kyle Jones
Glenn A. Strube
Jordan Cattle Auction
Connie Strum
Mr. Michael Sturm
Patsy Stuart, Sweetwater
Mrs. Diltzie Edmondson
Rosalie Sturm, San Angelo
Tex and Barbara Halfmann
Jerry and Dee Lackey
Pat Suba
Patty and Greg Knight
David L. Sullivan, Breckenridge
Mr. Robert A. Langford
Mike and Lytane Parker
Leslie Sullivan, Irving
Mrs. Darlene Smith
Lauren K. Sutton
John Ben and Cindy Cawley
Justin Brit Swift, Fort Worth
Mr. Robert A. Langford
Banner Swindall, Menard
Rod and Tonya Roberts
Nancy Swindle, Sweetwater
Mrs. Shirley Graham
Roma Lee Swindle, Amarillo
Annette Cooper
Mrs. Shirley Graham
Ruth Kelly
Bob and Della Mae Vickers
Mary Len Swinney, Abilene
Randy and Kay Spiva
Mary L. Sykes, Ballinger
Jean Herring & Family

MEMORIALS GIVEN *in 2022*

-T-
Cloyce Talbott, Snyder
Joe and Sissy Beck
Kirk and Maureen Morris
Ben and Michael Murphy
Ben, Michael and Brent Murphy
David R. Talbott, Ballinger
Mr. and Mrs. Fritz Richards
Carlos Talley, Abilene
Mrs. Sue Key
The Talley Family
Bonnie (Jo) Joyce Tate, Aspermont
Carter and Julie Fore
Judy K. Tate
Marilyn Williams
Freddy Tatom, Cross Plains
Charles and Nancy Palmer
Ricky Glenn Tatsch, Sr., Mason
Jordan Cattle Auction
Alan L. Taylor
Jordan Cattle Auction
Billie Taylor
Johnny Harkins Family
Bryant Taylor
Randahl and Debra Lohse
Buster Taylor, Gail
Ben, Michael and Brent Murphy
Don Taylor
Robert and Karen Burns
Homer and Beth Taylor
Mrs. Maria C. Aguirre
Nick Taylor, Coleman
Mr. Lonnie W. Jones
Terry and Scott Taylor
Lee Taylor
John R. Temple, Sweetwater
Eddie and Andi Thornburg
Lucy Temple, Abilene
Patty and Greg Knight
Helen Templeton, Haskell
Steve and Lesa Hertel
Mr. and Mrs. Jackie Wilcox
Allan Eugene (Gene) Terry, Roby
Mrs. Diltzie Edmondson
Kayce Terry
Mrs. Diltzie Edmondson
Bob Test, Abilene
Mrs. Janis Test
Albert Thane, Haskell
Margaret Chaffin
Ms. Paulette L. Jones
Mr. Darrell Richards
Bryce S. Thieman, San Angelo
Liz and Devin Bates
Camille Kerr
Steve and Kelly Martin
Lee and Candyce Pfluger
Grace Thomas, Haskell
Billy and Peggy Middlebrook

Peggy Thomas, Abilene
Dr. George A. Dawson
Dorothy Thomason
Mrs. Kaye Schwertner
Nelda Thomason, Brackettville
Jean Herring & Family
Betty Thompson
Mrs. Diltzie Edmondson
Chaunce Thompson, Jr., Breckenridge
Rob and Peggy Brown
Jordan Cattle Auction
Mr. Robert A. Langford
Deen Thompson
Larry Holamon
Jenny Smith
Merle Thompson, Bend
The Holamon & Gist
A. J. and Mary Thorn
Mr. Steve Morton
John Quinn Tidwell
Mr. Alvis Ashley
Shalon Crabtree Tillotson
Rob and Lindy Robinson
Eddie Tingle, Miles
Mrs. Pam Tingle
Darrell Tinney, Abilene
Ms. Barbara Pinkston
Tito, San Angelo
Ms. Christina Dominguez
Cynthia C. Titus
First Financial Bank
Gail Tobin, Ovalo
Citation Jet Pilots Association
Hugh and Cheryl Hardy
Ross and Nancy Jones
Procter Automotive Service
Bill and Lila Senter - The Explorers
Dr. Howard A. Tobin
Mr. and Mrs. Bobbie L. Wolfe
Maxine Rutherford Todd
Lee and Candyce Pfluger
Goza Tolle, Abilene
Mrs. Mary L. Tolle
Harlan L. Tonn, Jarrell
Mary Z. Schubert
Mrs. Fayrene A. Tonn
Ms. Melissa Tonn
Warren Townley, Canyon
Mr. Johnny G. Copeland
Rita Trammell, Aspermont
Shannon, Dana, Shae and Jenna Berry
Curtis Traweek, Ballinger
Grant and Sherry Lee
Alyene Trewitt, Coleman
Ms. Pat Hayes
Rick Tripp, Brady
David and Linda Springer
Maybelle Trout, Eastland
Robert and Melody Barr

Tammy Truelove
Tom Green County Fresh Water
Supply District #2
Cecil R. Tucker
James and Cathy Wright
Kenneth Hardy Turnbo, San Angelo
Mr. Brian Stewart
Dwain and Molly Stewart
H. L. Turnbow, San Angelo
Kirk and Patsy Cleere and Family
Charles and Ruth Ann McClain
Carolyn Louise Turner
Mr. Denny E. Turner
Eva Turner
Randy and Barbara Carson
Mona Faye Turner, Voss
Charley and Sue Cullins
Robert R. (Bob) Turner, Voss
Mr. Darrell Richards
Wade Turner
Mrs. Mari Kay Morrison
Jaki Tyler
Ben G. and Molly Scott
-U-
Antonio Urteaga
First Financial Bank of San Angelo
-V-
Sebastian (Seb Chan) Valencia, Mertzon
The Evans Family
Mrs. Shana Gipson
Jim and Elaine Howard
Kathleen Valenta
Mrs. Fayrene A. Tonn
Ruth Valenta
Mr. and Mrs. Gary E. Cilento
Frank Van Sickle
Chase and Kay Holland
Jack Edwin Vaughan, San Angelo
Grant Vaughan
Emily Vavra
Jim and Patricia Blackwell
Alfredo Velez, Jr.
Liz and Devin Bates
Gene Vernon
Ms. Peggy Vernon
Carla J. Vest
Mrs. Dorothy N. Varner
Margaret (Meg) Taylor Vick, San Angelo
Lee and Candyce Pfluger
Mrs. Sharalee Pierce
Maria Villalva
Mrs. Kaye Schwertner
Johnell S. Vincent, San Angelo
Lee and Candyce Pfluger
Braxton Vinson
Steve and Kelly Martin

MEMORIALS GIVEN *in 2022*

J. W. Vinson, Ovalo
Danny and Martha Alice Spraberry
James Dwain Vinson, Abilene
First National Bank of Ballinger
-W-
Donald L. Wadsworth, Abilene
Mr. and Mrs. Thomas A. Wadsworth
Jay Guy Wadsworth
Ron and Janie Holt Giddiens
Nancy Wadsworth, Abilene
Mr. and Mrs. Thomas A. Wadsworth
Greg Wahlberg, Cross Plains
Tommy and Kathie Rogers
Bettie Gene Hines Wainscott, Haskell
Mrs. Jan Carver
Charles and Judith Chapman
Lonnie and Patricia Decker
Haskell National Bank
Mrs. Delight Jones
Willie Lampp
Tammyle C. Lyles
Bobby and Bernadette Moore
Barry and Debbie Niell
Teddy and Vicki Smithson
Dave and Carol Vollmer
Donna Wainscott
Joyce Wainscott
Brian and Cathye Williams
Jackie and Cynthia Young
Mrs. Mary J. Young
Danny Walker
Harry and Ruth Harding
Loyd K. Walker, Abilene
Marshall and Deann Eaton
Richard Lee Wall
Mrs. Frances Raye Sterling
Delbert Royce Wallace, Bangs
Frances Justus
Mrs. Jean Wallace
Kenneth K. Wallace
Mrs. Nancy Forbis-Stokes
Monroe Wallis
Doug and Susie White
Myrtle Ann Greenogh Wallis
Paige and Sue Baize
Larry Walrath, Abilene
Mrs. Marcia Walrath
James Wanoreck, San Angelo
Mr. Gene Davis
Michael and Kim Mikulik
Albert Cauthorn Ward, Sonora
Callaway and Ronda Hall
Sarah J. Ward, Lubbock
Shirley Buchanan
Guy Watson, Abilene
Todd Watson, Joe Watson and Staci Watson
Jack D. Watson, Hawkins
Todd Watson, Joe Watson and Staci

Watson
Ralph Way
Mrs. Carolyn Weatherby
Sid Weaver, Sugar Land
Jennifer Weaver
James Webb
Mike and Mary Lou Garrett
Clayton C. Weishuhn, San Angelo
Mrs. Carol G. Bennett
Roy and Chris Book
Stanley and Judy Book
Chris and Heather Braden
Donald and Sharon Braden
Larry and Brenda Bradford
Kirk and Patsy Cleere and Family
Jeff and Shari Copeland
Ms. Christy A. Davidson
Mr. and Mrs. David DeRusso
Brent and Mitzi Drennan
Jim and Donna Eggemeyer
Mark and Sharon Elam
Farmers Insurance Company
Employees
William (Buddy) Gerber & Family
Charles and Nora Glass
Roger and Melissa Glass
Mr. Duke Goodwin
Paula Gould
Mark and Twila Haechten
Tex and Barbara Halfmann
Mrs. Genny Henderson
Peggie and Danny Hoelscher
Mr. and Mrs. Jimmy Hokit
Mr. Adam D. Holik
Ruben and Rhonda Holik
Mr. Joe H. Holland
Brenda and Glen Kellermeier
Jimmy and Melinda Kent
Ms. Brianne Killam
Mr. Marcus Kocich
Doug and D’Ann Kuhlmann
Jerry and Dee Lackey
Mr. and Mrs. Charles P. Meadows
Clifton and Maxine Michalewicz
Michael and Kim Mikulik
Dr. Samuel Mirrop
Glen and Brenda Moeller
Mark and Glenda Moreland
Mrs. Mary L. Multer
David and Deborah Neal
Alan and Mary Lee Pelzel
Alice Piri
Ms. Cindy Ringer
Rodney and Karen Ripple
Ronald and Annell Salladay
Mr. and Mrs. Jim Skehan
Texas Bank
Fay Owen (Buster) Welch, Rotan
Vick A. Burk
Mr. Robert A. Langford

Tommie J. Wells, Baird
Mr. Thomas N. Wells
Rickie and Dean Wemken, Fluvanna
Tommy and Cindy Wright
Don Wende, Cisco
Mr. and Mrs. Robert D. Dunning
Mrs. Marilyn Fleming
Mrs. Avelon Wende
Nancy M. West, Stamford
Mrs. Jane C. Appling
Blaine and Paula Bennett
Mrs. Michelle Prewit Cranor
E C Tool & Supply, Inc.
Eide Bailly LLP
Steve and Kim Harrell
Mrs. Norma L. Harrell
Cody and Misty Mathis
Mrs. Yvonne Reves
Mr. Darrell Richards
Ms. Jayne Schoonmaker
Richard and Renee Strait
Texas Cowboy Reunion Ex-Hostesses
Mrs. Nancy Vaden
Family of Nancy Moore West
Nina Wester, Haskell
Mr. Sam Wester
Damon Whaley
Dale, LeeAnn, and Katie Greene
Patsy and Tommy LaFon
John Henry Whately
Mr. Robert A. Langford
Charles Wheeler
Ms. Lisa Dye
James H. Wheeler, Jr., Abilene
James and Shelley Hughes
John Wallace Wheeler, Baytown
Mrs. Mary Wheeler
Johnie Clinton Wheeler, Ovalo
Paige and Sue Baize
Whit Whitaker
Ann and Leslie Ohr
Clyde James (Jim) White Jr.
Winners Circle Patio Homeowners
Association Inc.
David White
Joe and Donna Riley
Frank C. White, Ozona
The Honorable and Mrs. Fred Deaton
Ivan White, San Angelo
Samuel and Kathleen Wylie
Jeananne C. White, San Angelo
Kirk and Patsy Cleere and Family
Chase and Kay Holland
Jim White, Dallas
Mike and Mary Lou Garrett
Pam White, Eldorado
Mrs. Becky Lux
Mack and Angela Redish

MEMORIALS GIVEN *in 2022*

Sarah Alexander White, San Angelo
Mrs. Joy L. Mergele
Vida White, Rule
Mrs. Rebecca Howell Baker Family
Virginia (Jenny) White, Hamlin
Melba and Terry and Deana Bailey
Zaron Lucas White
Ms. Carla Kujawski
Barry Whitehead, Athens
Weldon and Mary Ann Whitehead
Donald Ray Whitley, Rotan
Mr. David Groves
Dolores Reyes
L. D. Whittle, Jr., San Angelo
Mr. Del V. Velasquez
Helen S. Wiggins, Abilene
Sandy and Shelly Utley
Robert and Jane Wiggins
Ken Wiginton, Lampasas
Jean Herring & Family
James and Ollema Rose
Ms. Joyce Spreen
Jeanette Wilde, Rowena
Stanley and Judy Book
Marilyn Wilensky
Liz and Devin Bates
Ron and Janie Holt Giddiens
Flora Willberg
Stanley and Judy Book
Caden Lane Williams, San Angelo
Gwen Calvert
Jerry and Dee Lackey
John and Jan Lineweaver
Donna Williams
James and Arletta O’Shields
Elizabeth Murream Williams
Jim and Carol Freeman
Frances Lynelle Tankersley Williams, Knox City
Harold and Ann Elledge
First National Bank of Anson
Ms. Gloria Savage Fulwiler
Beth Joy
Shelby Kennedy
Jessica Tarver
Gary Williams
Dr. and Mrs. John E. Alexander
Grady and Laura Mae Williams, Goree
Dwaine and JoAnn Williams
J. O. Williams, Austin
Dr. George A. Dawson
Ann Rode
Kirk and Shronda Shannon
Family of Dr. J. O. Williams
Melvin Ray Williams
Liz and Devin Bates
John and Carla Woolley

Roger Williams
Johnny Harkins Family
Diana Lynn Williamson, Snyder
Kim and Gary Clay
Doug and Susie White
Jacqueline Wills
Ty and Mindy Wills
Lanelle Willig, San Angelo
Liz and Devin Bates
Texas Bank
June Willingham, Woodson
Greg and Karen Holditch
Terry Holditch Witter
Bruce Wilson, Rising Star
Mr. and Mrs. David Armstrong
Robert and Karen Brown
Tessa and Colin Cooper
First Baptist Church Monahans Joy Class
Don and Gwen Hudspeth
Mr. Rob Shelton
Lynda Steinberg
Turnbo Management Trust
Donald Wilson, San Angelo
Mr. and Mrs. Ray B. Bunnell
Kirk and Patsy Cleere and Family
Jerald Wilson, Coleman
Mrs. Nena Wilson
John T. Wilson
Mike and Mary Lou Garrett
Kenneth Wilson, De Leon
Mr. Charles Crawford, Jr.
Martha Lee Wilson
Callaway and Ronda Hall
Melba R. Wilson, Abilene
C. W. and Brenda Hudson
Robert Wilson
Wes and Lisa Beck
Sandra K. Wilson, Coleman
James and Chrissi Hail
Marian D. Windham, Baird
Mr. Arlon Baize
Mr. and Mrs. Dwight Canada
First Bank and Trust
Charles and Nancy Palmer
Bill Schumacher and Kay Frost
Miller and Marian Scott
Mrs. Sarah Stone
Mr. Tally Windham
Kristi D. Windland
Mr. and Mrs. Gerald Windland
Barbara Witt, Coleman
Dr. Robert and Trina Fink
Ima Gean Wittie, Abilene
Patty and Greg Knight
Family of Ima Gene Wittie
Stella Bolding Wolfenbarger, Mertzon
Susan Keenum
Texas Bank

Janet Sue (Bullard) Wolffarth, Clayton
Mrs. Jan Carver
Tammyle C. Lyles
Edd Womack
Elizabeth Womack
Linda Kay Franklin Womack, Abilene
Don and Marilyn Dianne Barksdale
Bob and Donna Self
Judy Wood
Dean and Leigh Lowe
Violet Wood, Buffalo Gap
Van and Kathleen Grimes
William (Bill) Worley, Santa Anna
Mr. and Mrs. Richard L. Fiveash
Vance Worthington, Ozona
Mr. and Mrs. Bill Black
Gran Lago Services
Donald Wright
Ben G. and Molly Scott
Eva L. Wright, Sterling City
Tanner and Carol Mahan
Ron Wymore
Matt Wymore
Kay Carter Wynne
Mrs. Sharalee Pierce
-Y-
Manuel Yanez
Eddie and Andi Thornburg
Kevin Howard Yarbrough, Tucson
Mr. and Mrs. Dwayne Yarbrough
Sarah Yates, Eldorado
Mr. and Mrs. Clint Smith, Jr.
William (Bill) Yeates, San Angelo
Carol Flury
Lawrence and Mira LaBeau
Marsh McLennan Agency
Ellen M. Young, Abilene
Craig and Jenny Young
Lela Young, Burkett
James and Arletta O’Shields
-Z-
Harvey J. Zesch
Jordan Cattle Auction
Mary Rodgers Zientek
Mrs. Patricia A. Iverson
Mike and Cheryl Lawson
Ms. Jennifer Mitchell
Eddie Zrzavy, Abilene
Mike and Mary Lou Garrett

MEMORIALS GIVEN *in 2022*

Thank You.

For those who gave throughout 2022, thank you so much for your kindness, generosity, and support of West Texas Rehab and our patients.

Thank you for remembering and honoring these amazing folks.

We are blessed by your friendship.

West Texas Rehabilitation Center is launching their “*Building for Patients: Today. Tomorrow. And Always. Capital Campaign.*” The mission of this campaign will be to raise funds needed to build a new state of the art, all encompassing, clinical facility in Abilene, Texas. The new,133,000 square foot facility will promote the highest quality patient care, improve efficiencies and safety for their ever-growing patient population, ensure cost savings, improve access and visibility to care with a prime, more accessible location, and enhance the overall morale of all who enter our doors.

The project includes moving our Abilene campus to land located at the corner of Covenant and Memorial Drive, north of Sam’s Club. Our current buildings consist of 80K SF. The new building will have expansion capability of 40K SF as we continue to grow. The WTRC campus will be located on 16 acres with a total capital investment of \$77M. The building will house our corporate offices, patient and financial accounting departments, along with all of our therapy services to include pediatric and adult physical therapy, occupational therapy, speech therapy, hospice, audiology, orthotics, prosthetics, and employer services.



For more information, please scan the QR code to see additional photos and a breakdown of the total cost, along with updates on our fundraising efforts.



HONORARIUMS GIVEN *in 2022*

-A-	Michael Benetich, San Angelo
Abilene Sports Medicine & Orthopedics	Jim and Wanda White
Dr. Susan K. Crain and Kelli Crain	Mr. John P. White
Della G. Akard, Abilene	Diane M. Berger, San Antonio
Mike and Mary Lou Garrett	Eugene and Ethel Berger
All Service People	Eugene Berger, San Angelo
Mr. and Mrs. Ivan Conner	Ms. Diane M. Berger
Maddy Allen	John Berry, Abilene
David and Amy Allen	Rodger and Nan Kennedy
Betsy L. Ambrose, Abilene	Charles C. Boecking, Abilene
Donald and Nancy Hughes	Tom and Marian Boecking
Jonathan Ardoyno, Abilene	Danny Boukhris, Abilene
Gary and Evette Orren	Anna Lewis
Doris Armstrong, Abilene	Carroll Bozarth
Karoleigh and Rick Armstrong	Mr. and Mrs. Bo Bozarth
-B-	Whitney Brandon, Wall
Ali Bailey, Abilene	Mr. Don Pearson
Mrs. Janie Fanning	Randy Brillhart, Fort Worth
Donald and Nancy Hughes	Ms. Sherron B. Torres
Charles Baker	Karla D. Brown, Abilene
Mr. and Mrs. Ned G. Smith	Billy and Charline Standly
David L. Ballard, Abilene	Sharon Bryant
Mr. M. Jeff Goodin	Ken Bryant
Wade Banister, San Angelo	Kenneth Burgess, Lubbock
Mr. Garner Roberts	John and Jan Lineweaver
Mason Barr, Hondo	-C-
Mrs. Yvonne Reves	John R. Caldwell, Albany
Ivory Bass	Don and Sunday Tidwell
Mr. Garner Roberts	Jay D. Capra, Abilene
Peter S. Batjer, San Angelo	Ms. Patricia H. Capra
Dr. and Mrs. Fazlur Rahman	Ruth Carter
Mary Bauernfeind, Abilene	Mr. Jeffery Cary
Paul and Barbara Bauernfeind	Bill Casey, Abilene
	Dr. Terry and Vicky Foster

Steve Cecil, San Angelo
Suzanne Patty
Megan Cheek, Abilene
Jayma Savage
Mrs. Charlene Walker
Children
Roy and Margaret Green
Dewayne E. Chitwood, Abilene
Endocrinology Associates PA
Charles Church, Snyder
David and Amy Wilson
Ronald Cline, San Angelo
Dr. and Mrs. Fazlur Rahman
Bennett Cook, Lubbock
Mike and Jerre McAfee
Jacie Cortese, San Angelo
Jimmy and Barby Nobles
Brenda Crawford, Buffalo Gap
David and Donna Gist
Sharon Cross, Abilene
David and Donna Gist
-D-
Jay M. Dalbey
Maddox and Campbell Potts
Frances Dankworth, Fort Worth
Steve and Iris Matthiesen
Craig Davidson, Allen
Mike and Mary Lou Garrett
George A. Dawson, Abilene
Martin and Lucy Dawson
Nan Dawson
Steve and Kay Dawson
Lyndy Dawson Edwards
Mrs. Virginia Holley

HONORARIUMS GIVEN *in 2022*

Louis DeLaCruz
Mrs. Susie Stamper
Denise Dennis, Stamford
Anonymous
Ms. Jacquelyn Barnett
Jay and Sharon Beakley
Buddy and Sharon Bolin
Mrs. Ethel Bounds
Cecile Cobb
Mr. and Mrs. Don Cobb
Bobbie Connally
Mr. Cary Davis
Mrs. Iva E. (Skeet) Dennis
Jim and Sheri Dixon
Gary and Judy Ender
Ms. Natasha Howard
Bobby and Flo Lewis
Suzanne Martin Ward
Mr. George R. Masters
Cody and Misty Mathis
Aaron and Elizabeth Miller
Lynn and Robin Nauert
Ms. Mary E. O’Connor
Mrs. Brenda Reel
Don and Carol Walker
Mr. and Mrs. John G. Wendeborn
Iva E. (Skeet) Dennis, Stamford
Don and Carol Walker
Lorenza Dominguez
Ms. Christina Dominguez
Ashley Dyches, San Angelo
San Angelo Cross Texas Supply LLC

-E-	Jaime A. Gonzalez, San Angelo
EBAA Iron, Inc and EBAA Iron Sales, Inc Employees	Mrs. Julia Gonzalez
Mr. Barry F. Johnson	Grandchildren
-F-	Mr. and Mrs. Andy Bollinger
Frank Fardatta, Dallas	Mr. and Mrs. J. D. Kelly, Jr.
Scott, Pam and Ian and Bailey	WSC Inc.
Tankersley	John Green, San Antonio
Anita P. Fergus, Abilene	Jerry and Donna Multer
S. M. and Portia Moore	Gideon Greenhaw
Pat Fitzgeraled	Garrett and Lauren Greenhaw
Kyle and Kim Burnett	Cathy Grimes, Henderson
Claire Fonteno, Austin	John and Nancy Nichols
Marylan K. Bacon	Robert M. Grimes, Buffalo Gap
Paige Foster, Abilene	John and Nancy Nichols
Rex and Darla Foster	-H-
Richard Franks, Hart	Amanda Harman
Ben G. and Molly Scott	Mr. Albert Wilhite
Dottie Frerich, San Angelo	Colby Harper
Wayne and Becky Cockrell	Kristi Harper
Allan D. Frizzell, Abilene	Ms. Elaine Johnston
Joseph and Jo Canon	Joy Gail Harvey
Glenn Funkey, Abilene	Mr. and Mrs. Bill Faske
Mr. Rex L. Nutt	Joe Haynes, Coleman
-G-	Mr. Joe Haynes
Frank Gerngross, Jr., San Angelo	Sandy Hazelip, Eastland
Mr. and Mrs. Wilbert Jost	Mr. and Mrs. Burrell McKelvain
Woody Gilliland, Abilene	Mitch L. Heidenheimer, Anson
Mr. Carl R. Childers	Barbara P. Chapman
Lawrence and Mary Gill	Robert E. Helmers, Christoval
Rodger and Nan Kennedy	B. W. and Lesa Kennedy
Mike and Janice Parker	Jim Henry, San Antonio
Ace Gleason	Mrs. Katherine Muller
City of Abilene	Brad Hicks, Abilene
	Mrs. Loretta Carter

HONORARIUMS GIVEN *in 2022*

Jay Holt
Mr. Theo Holt

Estelle Honeycutt
Joe and Jane Lee

Robert H. Hoppe, Abilene
S. M. and Portia Moore

Hospice of San Angelo (HOSA), San Angelo
George and Angie Lane

Hospice of the Big Country (HOBC), Abilene
Mrs. Janet Taylor

-J-

Marco Jimenez, Abilene
George and Tootsie Nichols

Randal Johnson, Fort Worth
John and Nancy Nichols

-K-

Mark Kappel, Abilene
S. M. and Portia Moore

Arthur Kasner
Ms. Kaci Griffith

Jana Klein, San Angelo
Ralph and Brenda Stirl

Peter Kloeber, Flagstaff
Ms. LaVonne Sue Lodor

Larry Kujawski, San Angelo
Daniel and Jean Kujawski

-L-

Pat Leggett
Kiwanis Club of Greater Abilene

Bernice T. Lyons, Abilene
David and Donna Gist

-M-

Joe Maddox, Hermleigh
James and Donella Parker

Steve W. Martin, Abilene
Jim and Cheryl Leonard

Sharon McDonald, Abilene
Endocrinology Associates PA

Bill McManus, III, San Angelo
Jan Bryan

Becky Lange

Marley Sunshine Mercer
Ms. Mary Pat Mercer

Craig Meyers, San Angelo
Dr. and Mrs. Fazlur Rahman

Bhodey Miller
Peggie and Danny Hoelscher

David Daniel and Constance Minzenmayer
Ms. Sarah Wagnor

David P. Mitchell, Sulphur
Mr. Colby Mitchell

Sandra Mitchell, Abilene
Mrs. Carolyn L. Williams

Jim Motheral, Fort Worth
John and Nancy Nichols

-N-

Madie Newman, Abilene
Mrs. Chris Moses

Jeff Nichols, Fort Worth
John and Nancy Nichols

-P-

Mike Page, Fort Worth
John and Nancy Nichols

Elizabeth B. Peterson, San Angelo
Dr. and Mrs. Fazlur Rahman

Lee Pfluger, San Angelo
Mrs. Marilyn T. Flage

Walter W. Pfluger, San Angelo
Ms. Martha Elder

Donna S. Price, Snyder
Joseph Financial Partners

Berkeley Puckitt, Wall
Lee and Sandy Puckitt

-Q-

Gunner Quirk, Sterling City
Mr. and Mrs. Gary Foster

-R-

Crayton M. Rains, Roscoe
Robert and M'Liss Moore

B. Raji Ramadoss, San Angelo
Dr. and Mrs. Fazlur Rahman

Harry C. Reaugh, Hawley
Charles and Tommye Clark

Maudie Reeves, Abilene
McIntire Siblings

Tim and Jeannie Reeves, Christoval
McIntire Siblings

Justin Reis, Gulf Breeze
Hopper Happy Trails

Kendra Ricks
Ms. Lynda M. Conley

Chuck Rodgers, Abilene
Joseph and Jo Canon

Mrs. Carol Corley

Mrs. Judy Wilson

HONORARIUMS GIVEN *in 2022*

Tom Rose, Abilene
Kathi and Jamie Masonheimer

Roszkowski Kids
Paul and Judith Roszkowski

John Rubin, Fort Worth
John and Nancy Nichols

-S-

Whitten Schaffner
Mike and Tanya Barker

Emma Schkade, San Angelo
Earl and Thelma Fussell

Sylvia Thompson

Karen K. Schmeltekopf, San Angelo
Mrs. Beth Peterson

Ann Shaw, Ozona
Mrs. Marolyn Bean

Chris Smith
Mr. and Mrs. Gary Oliver

Thomas Snell, Miramar Beach
Mike and Mary Lou Garrett

Frances Sooter, Abilene
Mr. and Mrs. Ronnie Kidd

Fred Spradley, Fort Worth
John and Nancy Nichols

Steagall Family
Kristi Lewis

Red Steagall, Fort Worth
Chase and Kay Holland

Ms. Jane Hooker

Mr. Garner Roberts

Connie Stephens, Abilene
Robert and Louise Lockhart

Steve Stephens, San Angelo
Mr. and Mrs. Lucas Bell

Jean Stepp, Eden
Mrs. Elizabeth Cypert

Steve Story, Shawnee
Mr. Carl Deaton

Samuel Stovall
Ms. Betty J. Burrow

Mr. and Mrs. Roy Graham

Elizabeth L. Valenta

-T-

Josh Tanner, San Angelo
David and Gina Tanner

Janet Taylor, Abilene
Harold and Mary Cornelison

Austin Teitelbaum, D.D.S., San Angelo
Dr. and Mrs. Fazlur Rahman

Eddie Terbush, Tuscola
John and Nancy Nichols

Texas Family Popcorn, Abilene
Toni McAdams

Patti Tharp, San Angelo
Dr. and Mrs. Fazlur Rahman

The Lee Family, Syracuse
Pastor Jasper W. McClellan

The Stewart Triplets, San Angelo
Mrs. Betty Dusek

Ms. Roxilea Holik

Joseph S. Thieman, San Angelo
Joe and Janet Andrews

Miller D. Thweatt
Mrs. Laurie R. Gayler

Davey and Lorri Thweatt

Johnny Trotter, Hereford
First Financial Bank

-U-

Jeff Upp, Abilene
Franklin and Tellie Upp

-V-

Veterans of Military Service
Mr. Donald Brenholtz

Jimmy Villers, San Angelo
Mrs. Judy Turner

-W-

Alan Wentrcek
Ms. Virginia Wentrcek

West Texas Rehab, Abilene
Carter and Laura Behrens

Frank and Tempe Gerngross

Ms. Bobbie Holden

West Texas Rehab, San Angelo
Mrs. Beth Peterson

Hadley Whitaker, Anson
Mr. Rocky Glasscock

Dan Whitely, Eden
Mrs. Elizabeth Cypert

Shannon Wilkins, Albany
Don and Sunday Tidwell

Carl Williams, Hermleigh
Carl and Nona Williams

Ryder Willmann
Mr. and Mrs. Sonny H. Hart

J. D. Wright, Abilene
S. M. and Portia Moore

-Y-

Dorothy Yandell, Abilene
Terry and Janice Corbett

Alma Youngblood
Tom and Marian Boecking



53rd Annual TELETHON & AUCTION

What a night! Our official off air total:
\$1,805,313!



*Thank you to ALL our amazing
donors & sponsors!
You ensure our patients continue
to receive care, regardless of
their ability to pay!*



4601 Hartford
Abilene, Texas 79605